

Youth Advisory Committee

Meeting Date: Wednesday, 17 August, 2022

Location: Jervis Bay Rooms, City Administrative Centre, Bridge Road, Nowra

Minutes Attachments

Index

YA22.18	Transport for New South Wales Presentation	
Attachment 1	TfNSW Communities & Place Project Team - Presentation - 16 Regional Cities Services Improvement Program	1
YA22.19	Shoalhaven Community Investment Committee Presentation	
Attachment 1	Presentation - Shoalhaven CIC Youth Involvement.....	15
Attachment 2	Hiring List - Information to Register for Employment	21

16 Cities Regional Services Improvement Program & Illawarra Shoalhaven Regional Transport Plan

Presentation to Shoalhaven City Council
Youth Advisory Committee
17 August 2022

Fiona McLauchlan
Senior Manager, Community and Place Partner
South East Coast



OFFICIAL





Transport pays respects to Elders past and present, and recognise and celebrate the diversity of Aboriginal peoples and their ongoing cultures and connections to the lands and waters of NSW.

16 Regional Cities Services Improvements Program

Presentation to Shoalhaven City Council
Youth Advisory Committee
17 August 2022

Chris Randle – Project Manager
16 Cities Program (South)



OFFICIAL



16 Regional Cities Program Overview

The 16 Regional Cities Services Improvement Program is a commitment to **improving public transport services throughout regional NSW.**

Improvements to regional bus services will aim to provide better connections to where customers need to go for **work, schools, health, and social and recreational activities.**

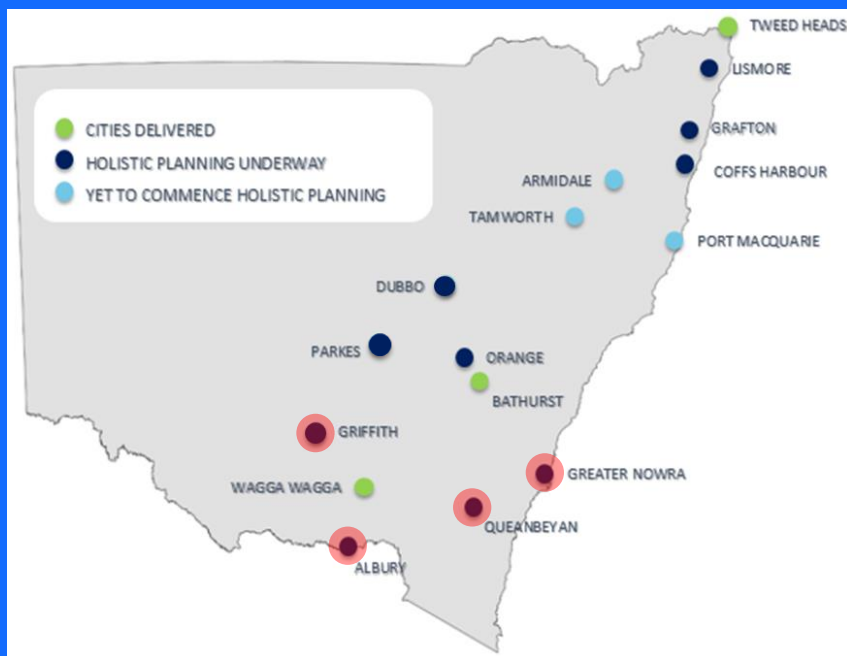
- Better meet customers travel needs
- Provide equitable access to public transport
- Provide integrated, multi-modal, end-to-end journeys
- Provide cross border journeys
- Improve customer information
- Improve asset usage and operational efficiency
- Streamline service offerings

Over **2,100** additional weekly services introduced to date equating to over **22%** increase to the existing bus network within these 16 cities.

OFFICIAL



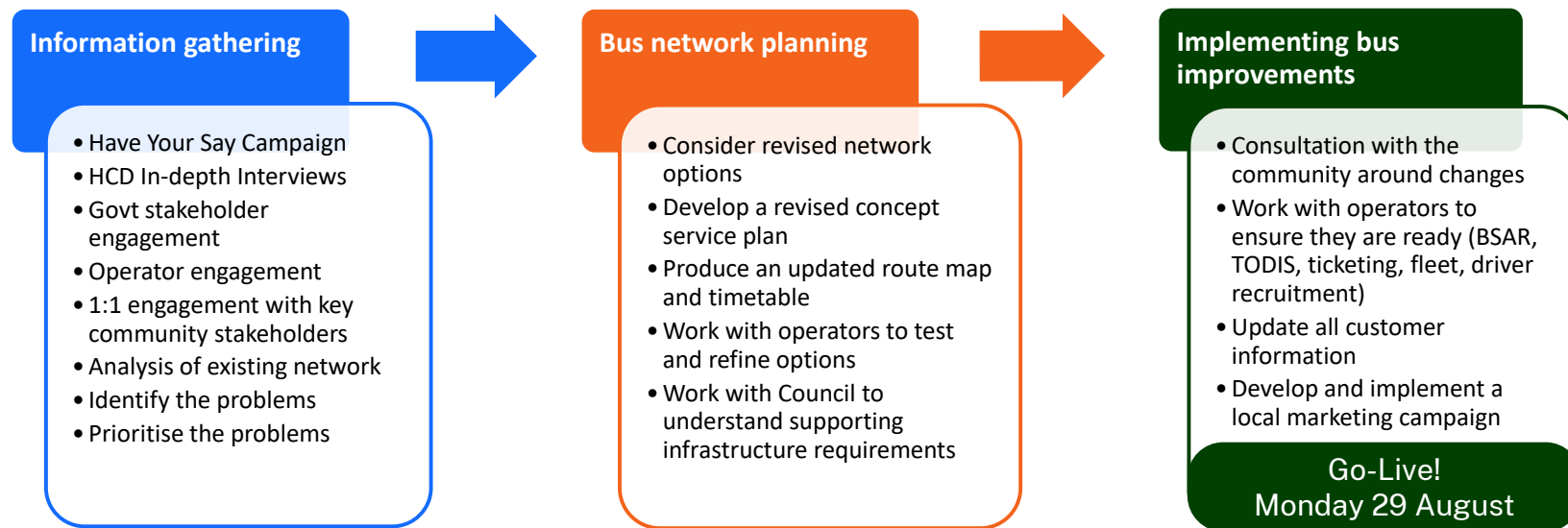
16 Regional Cities – Greater Nowra Program Status



- **All** cities completed Phase 1 (Top Priorities Phase)
- **3** cities fully delivered (Tweed Heads, Wagga Wagga, Bathurst)
- **10** cities commenced Phase 2 (Holistic Planning Phase) including **Greater Nowra**
- **3** cities yet to commence phase 2 (Holistic Planning Phase)

OFFICIAL

16 Cities Nowra: Approach

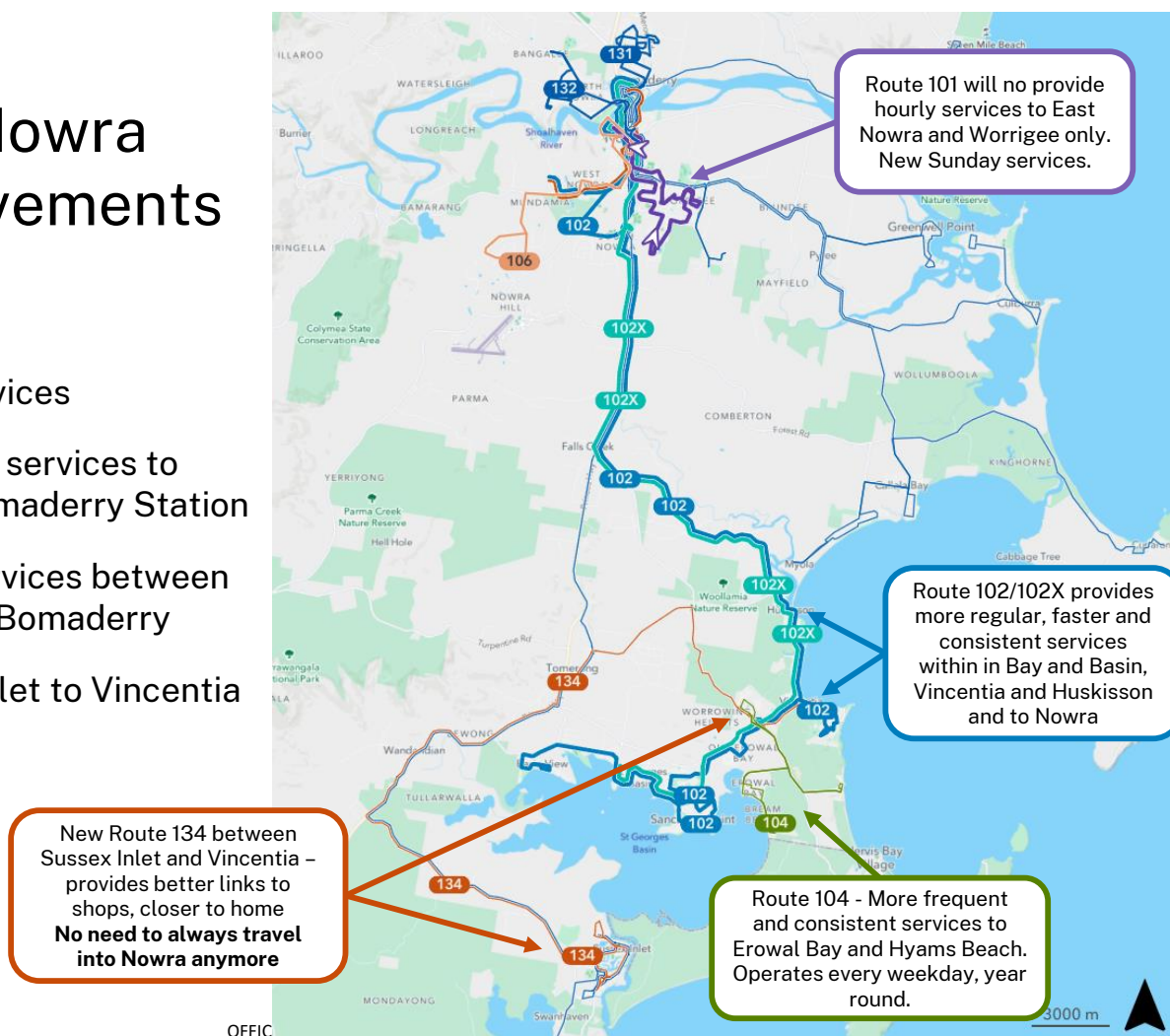
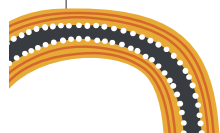


OFFICIAL

6

Overview Greater Nowra bus network improvements

- Over 250 additional weekly services
- New early morning and evening services to connect with rail services at Bomaderry Station
- New hourly Route 102/ 102X services between Bay and Basin, Nowra CBD and Bomaderry
- New connection from Sussex Inlet to Vincentia 4 times a day



TRANSPORT

Illawarra-Shoalhaven Regional Transport Plan

Youth Advisory Committee
17 August 2022

Mark Hannan –
Director, South & West
Regions, TfNSW

transport.nsw.gov.au



OFFICIAL

Illawarra-Shoalhaven Regional Transport Plan

TRANSPORT

1 Plan Snapshot

2 Why Important?

3 WIIFM?

4 Next Steps

OFFICIAL

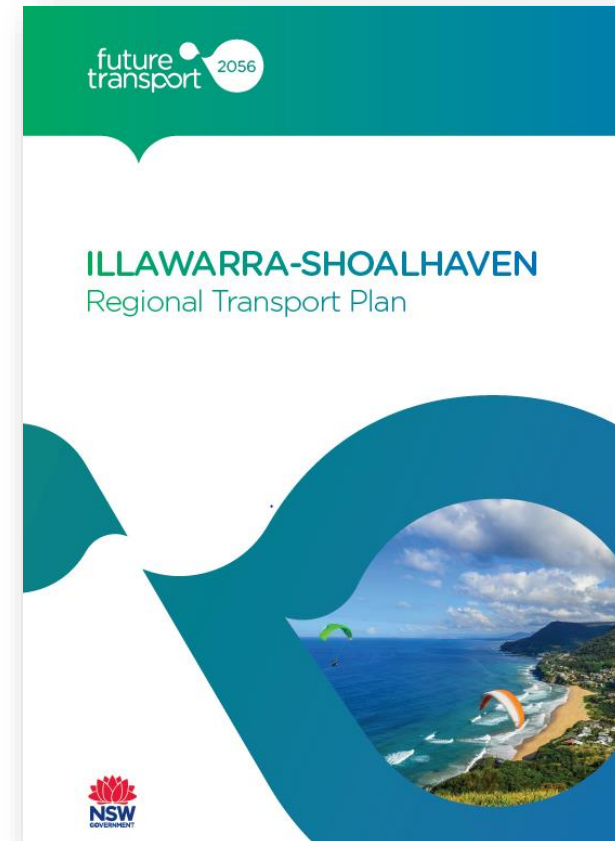
9

ISRTTP – Plan Snapshot

- Released in August 2021
- Presents a blueprint for transforming the way people and goods travel within, to and through the Illawarra-Shoalhaven over the next 20 years
- Enables Transport for NSW to respond proactively to changes in land use, demographics and demand
- Plan identifies 71 initiatives that in combination, will deliver the regional transport vision
- Key areas of focus:
 - more trips made by walking, cycling and public transport
 - more people, more often within a 30 minute PT trip of regionally significant centres
 - improved connections with Greater Sydney



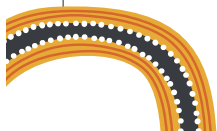
OFFICIAL



10

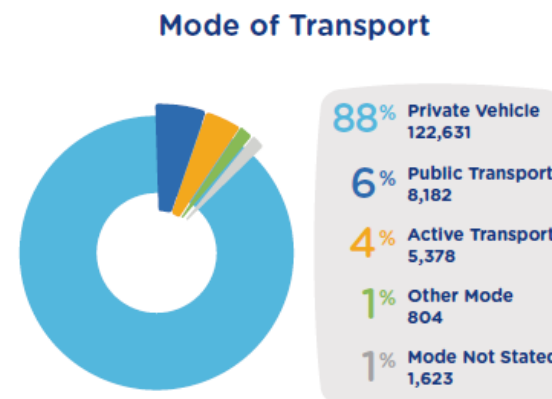
IS RTP – Why Important?

- A growing population – an extra 100,000 will call the Illawarra-Shoalhaven home by 2041
- Lack of attractive alternatives to the car – 88% of commuter trips across the region are made by private vehicle
- Need to transition to a low emissions future – transport sector is the second largest contributor to greenhouse gas emissions in NSW
- A safer transport network for all – fatal crash rate on country roads is four times that of metropolitan roads, and more than 70% of people who die on country roads are local
- Moving more with less – expanding opportunities for moving more goods by rail and more efficient and safe heavy vehicle combinations



Population
(Almost 100,000 additional residents)

	2016	2041
Kiama	22,110	26,107
Shellharbour	70,391	93,962
Shoalhaven	101,942	119,072
Wollongong	210,394	265,769
Total	404,837	504,910



OFFICIAL

IS RTP – WIIFM?

In Delivery

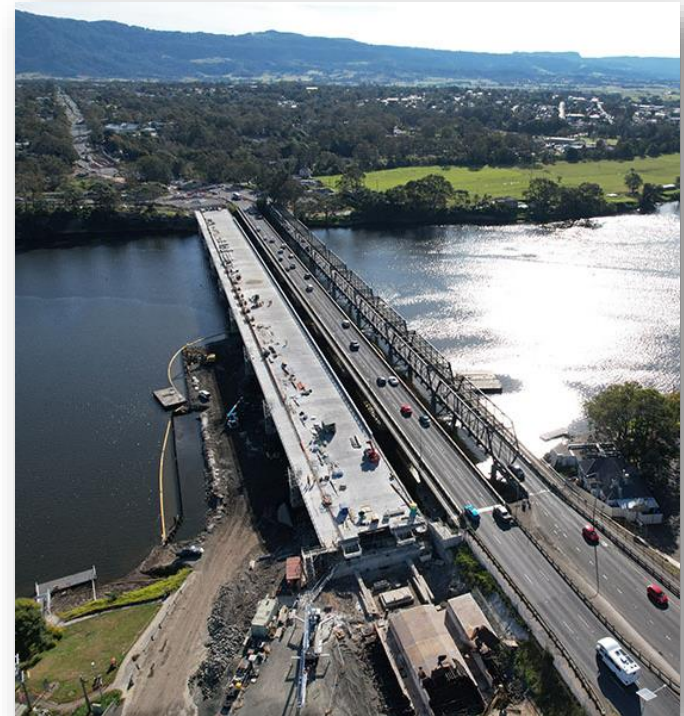
- 16 Cities Services Improvement Program – Nowra-Bomaderry
- Nowra Bridge Project

In Planning

- PHUP Jervis Bay Road Intersection Upgrade, Milton-Ulladulla Bypass, Jervis Bay Road to Sussex Inlet Road
- EV Fast Charging Network

Initiatives for Investigation

- 30 Minute PT Catchment for Milton-Ulladulla
- Improved bus services between Milton-Ulladulla and Nowra
- Sydney to Bomaderry Fast Rail Improvements
- Rollout of contactless ticketing into Regional NSW



12



OFFICIAL

ISRTTP – Next Steps

- Final Plan available at <https://future.transport.nsw.gov.au/plans/illawarra-shoalhaven-regional-transport-plan>
- Since publication, Transport for NSW has established an Internal Governance Group to oversee implementation of the Plan and 71 initiatives
- Transport for NSW will work closely with key partners for those initiatives categorised as ‘Collaborate’ and ‘Influence’
- Progress reported on annually via FT website
- Plan refresh will be undertaken every five years



13

OFFICIAL

Questions?

OFFICIAL

14

YA22.18 - Attachment 1

National Youth Employment Body (NYEB) + the Shoalhaven CIC

Who we are:

The goal of the NYEB is for communities to **drive their own planning and solutions** to make sure ***all*** young people access **meaningful and decent work**.

Our role is to **change power dynamics** to make sure **people** and **place** (young people, community, employers) can **make decisions** about the things that most affect them.



We care about making change, bringing community together, advocating for you and uplifting you as leaders.

We are a resource – use us!

Why young people?

- You are experts because of your diverse experience
- You have power, wisdom and potential to shape change
- We have a lot to learn from you



5 years after leaving education, 58% of young Australians who start their careers in casual jobs, GET STUCK in casual jobs, or can't move into study or work

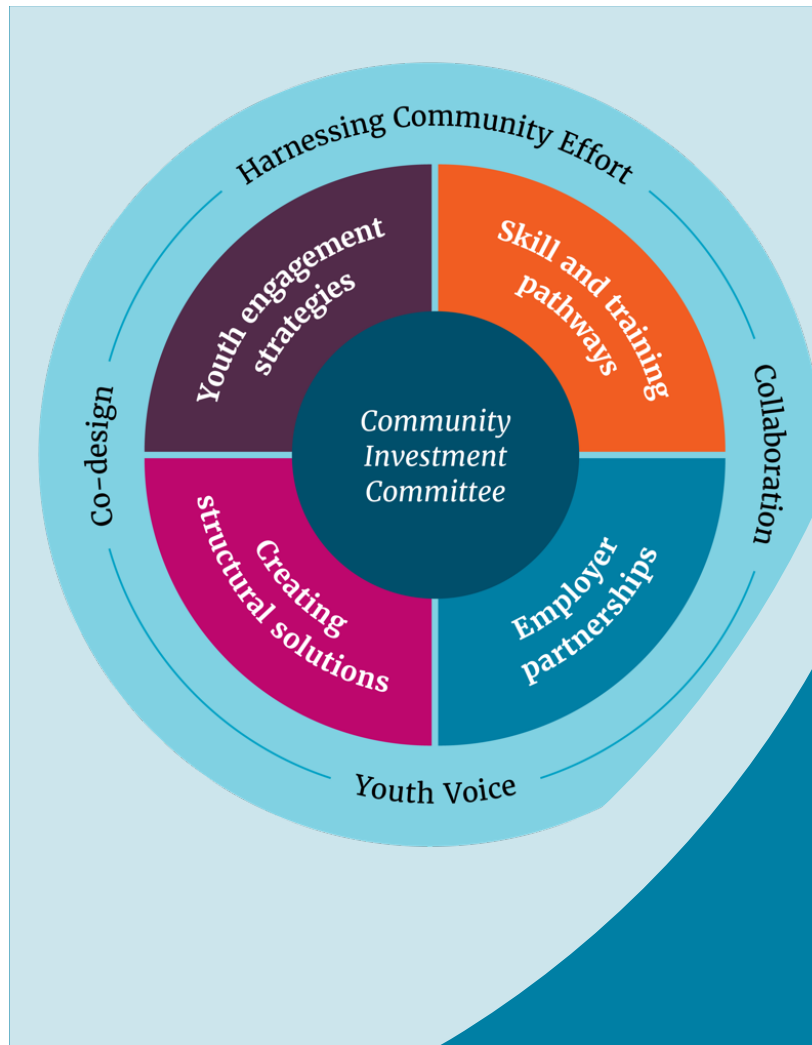
Millennials (also known as Gen Y, born between 1982 and 1999) and Gen Zs (born between 2000 and 2017) will make up 75 per cent of the Australian workforce by 2032.

- We all benefit from you leading change
- Worst impacts to jobs and pathways (like COVID)
- Uncertainty, insecurity

Shoalhaven Community Investment Committee (CIC)

- Made up of all different people in this area
- The BSL reached out to areas with high unemployment for youth and different things
- Asked to form a committee so that we could make some changes in the long term
- Built a committee with people that work strongly with young people
- All values- employment, education, employers, government, to form this Committee





What we do

- We have an **Action Plan** which guides our strategy
- Our direction changes depending on what we're hearing are the **needs of** young people, employers, and community
- We know that we need to **hear from young people directly** to really understand what's going on in your worlds and what you want and need
- We also want to involve you in coming up with ideas and making those solutions **come to life**
- We believe you could **add value** to what we do so that when we do something we're doing it because you want us to.
- We could add value too, by **bringing in solutions to our community that fit your interests, needs, and goals**
- We believe we do things because they help you and it's what you need but **we need to hear from your drive of what you want.**
- We want to **design and trial these new ideas**, with you, then we can see how they work.
- BSL takes the documentation and reporting of what those trials looks like – then has a **conversation on a much bigger level** so that one day when your kids come through, things work for them the way we know they should be working
- **We need to practice what we do to know it works**

Youth Involvement
- champion young people's capabilities by involving and valuing youth voice and participation in our activities

Objectives	Actions so far - to progress
Activate youth voice and involvement in our CIC meetings and projects	<ul style="list-style-type: none"> Engage with local young people on their wants/needs to identify gaps that could be bridged by this CIC Identify solutions and activities that will allow young people to re-engage in community and with services and supports Plan to collectively advocate for a hub or youth / youth-friendly cultural centre in Nowra Jessica to pass on Council connections within community engagement, Centrelink and Services Australia Explore potential for a mobile youth centre initiative to bring services/supports to young people
Feed in direct challenges and opportunities from young people you are working with	<ul style="list-style-type: none"> Shoalhaven City Council's Youth Advisory Committee Nowra Headspace Youth Reference Group Any groups from Shoalhaven River College / Kiama Community College

Handwritten Notes:

- Pink:** FIT IN w/ WHAT YP actually want - Jess came.
- Pink:** attend youth advisory group 18 Aug (jess cancel)
- Blue:** Look @ engagement w/ young people and what they want!
- Yellow:** YP from different cohorts from Mission (ENU)
- Yellow:** Sami: headspace: Youth Reference Group - input, approval, leadership.
- Pink:** surveys of YP connected to Stella Studios
- Yellow:** peer mentoring + youth leadership (Eile)
- Yellow:** Consultation groups with YP (office for regional youth) - Pete -> snapshots per region -> inform.
- Blue:** Pathways to EBT Connection to community health + wellbeing (regional) -> up to share Shoalhaven report
- Yellow:** insights from YP informing Action Plans -> directly inspiring action (Pete)

Logos: National Youth Employment Body, Brotherhood of St Laurence

Our priority = involving you

Trying to find things that might work that look after your wellbeing; going in that direction.

We've heard that people are scared to try things / getting stuck in jobs they don't like.

Shoalhaven
Community
Investment
Committee

Brotherhood
of St Laurence

National Youth
Employment Body

Our ideas

- Bus taster suggestion
- (Re)engaging young people: school, education, community
- What does that (re)connection look like?
- Safe space to go; youth hub/centre?

Action Plan Priority areas

Creating Structural Solutions	Youth Engagement Strategies
Advocate for, and enable, all young people's access to opportunities	Engage with young people experiencing disadvantage to connect them to services to provide the ability to navigate their own futures
Skill and Training Pathways	Employer Partnerships
Align local skills and training offers to ensure they are fit-for-purpose, accessible, and engaging for young people and connected to local job opportunities.	Champion employer investments in young people throughout initial service engagement to employment.



TheHIRINGList

Are you currently looking for work, but not registered with Centrelink? Perhaps you're returning to the workforce after an extended time away? Or you may have recently completed school, TAFE or training, or you'll be completing these in the next few months?

The Hiring List can help you land that next job.

Welcome to **The Hiring List**, which captures details of people who are ready and looking for work, and links them to immediate and upcoming jobs.

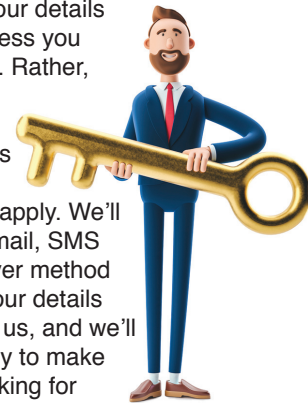
How it Works

Register your details with The Hiring List, and we'll notify you of jobs matched to your skillset and work preferences. The jobs are those pledged by employers under 'Is Hiring' campaigns, or where employers have approached **The Hiring List** asking for staff.

We work in partnership with the Australian government's Local Jobs Program, so have access to details of jobs that are often not well advertised to the wider market. Most of the jobs pitched to us are from employers who want to hire immediately, so chances are an opportunity will become available to you quickly.



We do not share your details with employers unless you give us permission. Rather, we'll inform you of opportunities that align with your skills and location, and will tell you how to apply. We'll let you know via email, SMS or phone - whichever method you've selected. Your details are kept private by us, and we'll contact you monthly to make sure you're still looking for work and wish to remain on **The Hiring List**.



It costs nothing to register your details with **The Hiring List**.

Register today, and take that next step towards that fantastic job!



**Scan to join
The Hiring List**

or visit:
www.thehiringlist.com.au

**Local Jobs
Program**
AN AUSTRALIAN GOVERNMENT INITIATIVE

HIRINGINNOVATIONS