

Shoalhaven Heads Estuary Taskforce

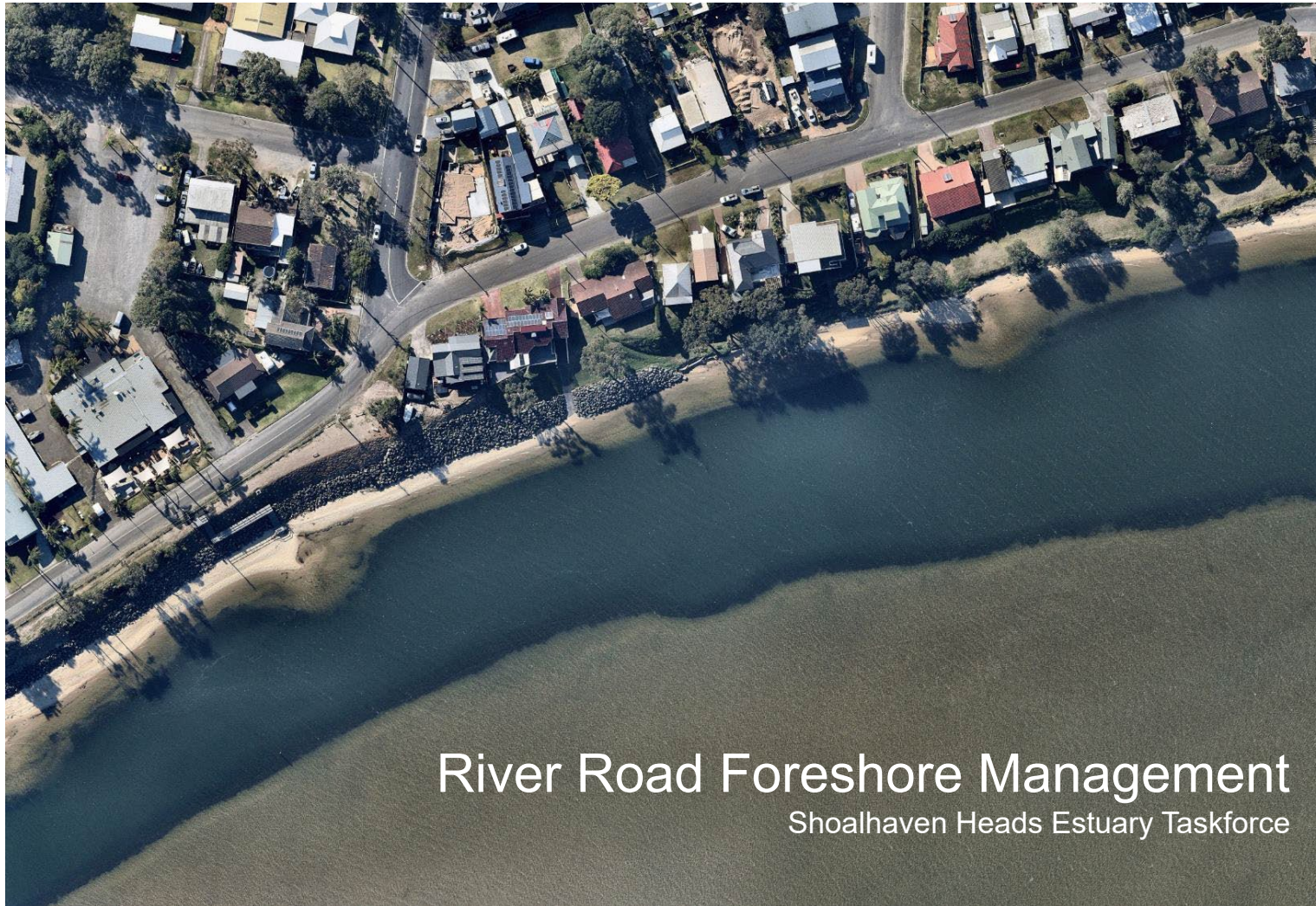
Meeting Date: Tuesday, 15 March, 2022

Location: Council Chambers, City Administrative Centre, Bridge Road, Nowra

Minutes Attachments

Index

SH22.2	River Road Foreshore Precinct Rehabilitation Project Progress Report - Request Assessment - Consultatoin - Sand - Stabilise Foreshore	
Attachment 1	River Road Presentation - NSW Water Research Laboratory.....	1
SH22.3	Shoalhaven Heads - River Opening - Entrance - Management - Plan - Flood Mitigation - Analysis - Modelling - upstream	
Attachment 1	Slide Presented to SHET by Robyn Flack - UNSW Water Research Laboratory - November 2015	19



River Road Foreshore Management

Shoalhaven Heads Estuary Taskforce



UNSW
Water Research
Laboratory

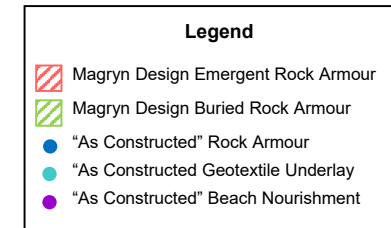
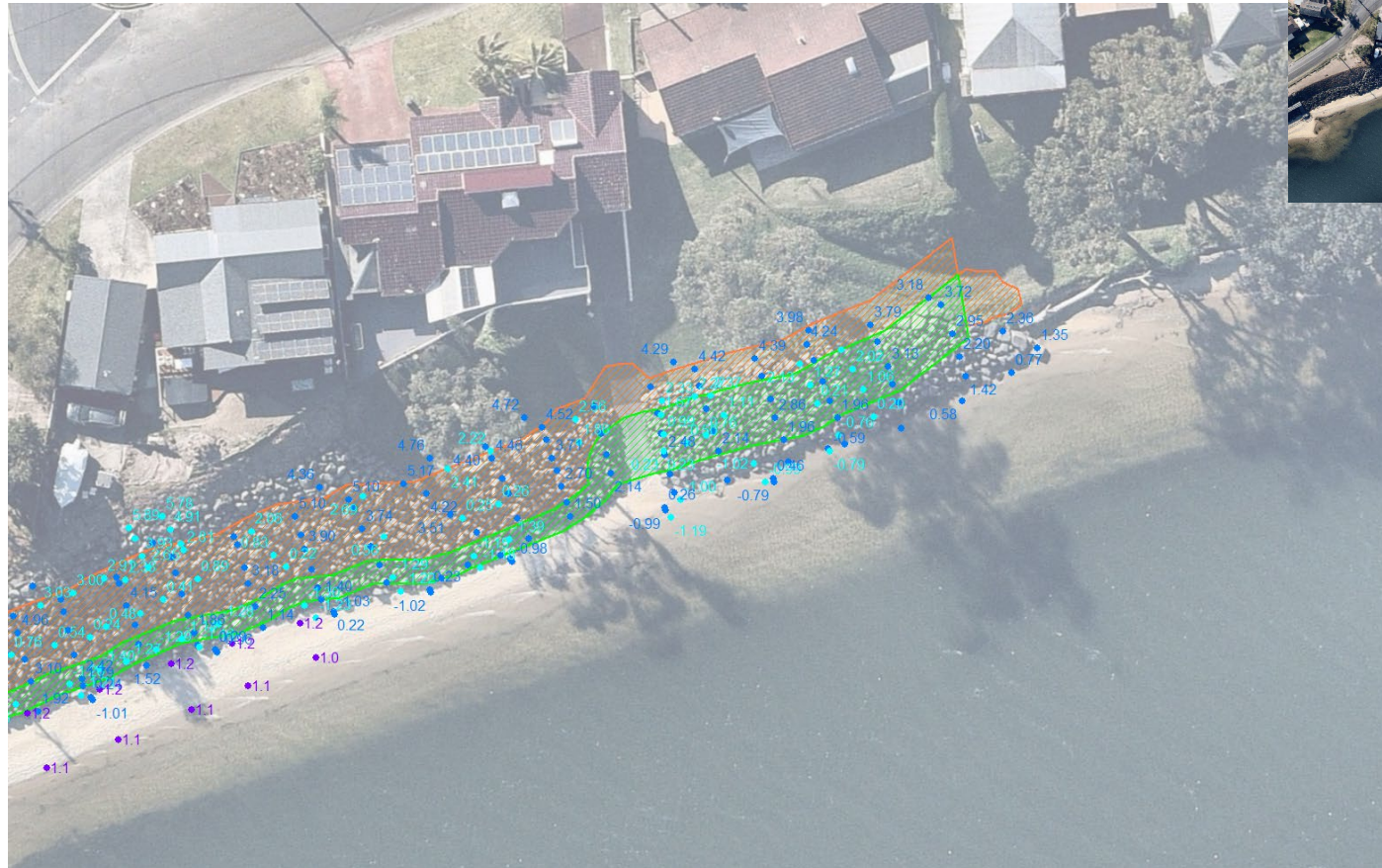


UNSW
SYDNEY

Overview of WRL Report

- Erosion issues around the end of the rock revetment
 - Why is there erosion occurring?
 - How should this be managed?
 - Should the revetment end be modified? How?
- Management of the foreshore
 - What are the erosion risks for un-protected areas east of the revetment?
 - What are the options for managing these risks?
- Recommended management approach













2016



2021





Bank toe alignment, 2011-2021



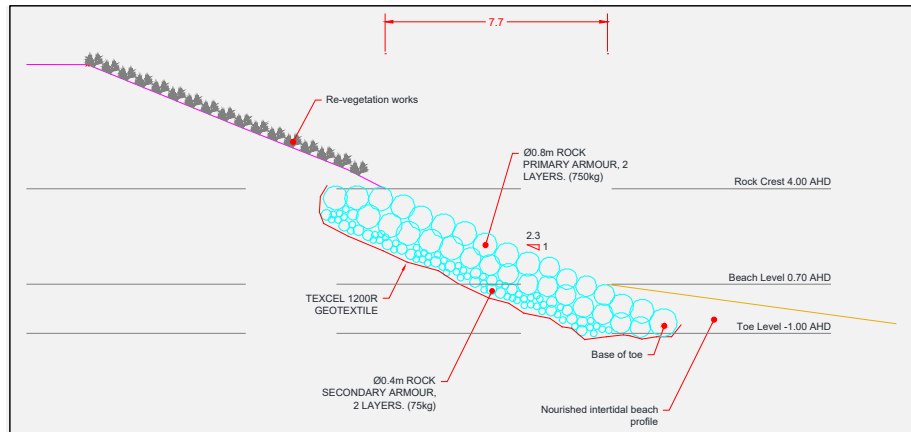
Bank crest alignment, 2017-2021



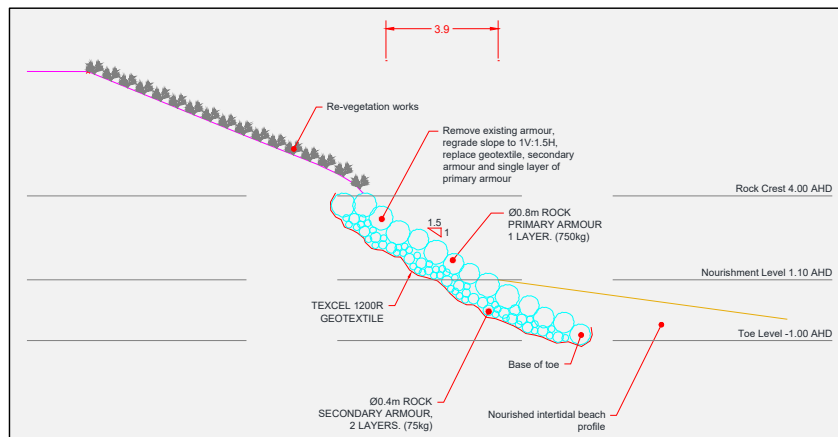
Figure 4.16 Study area and updated 2021 management priority



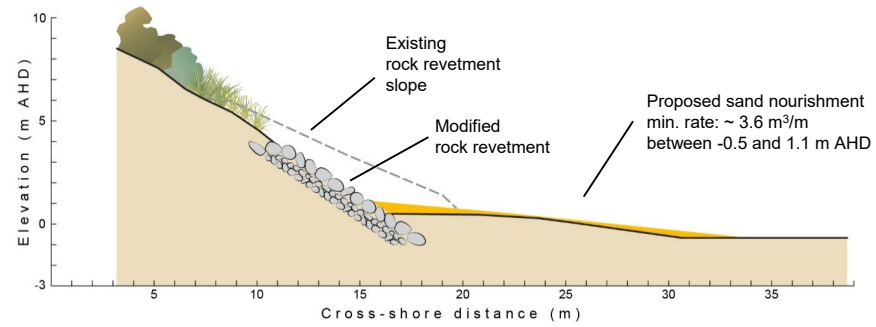
Figure 5.1 Overview of recommended management works

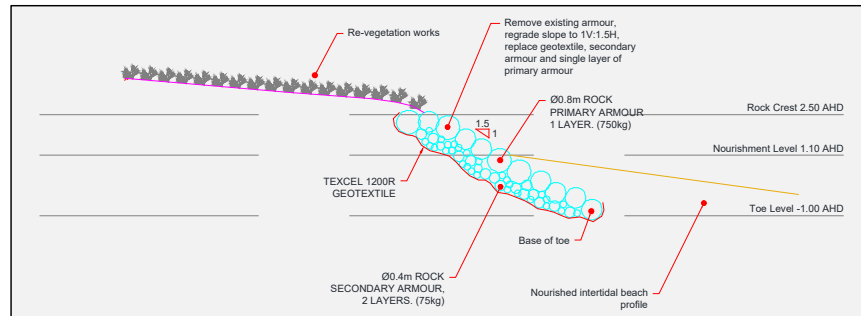


Existing



Modified





Modified



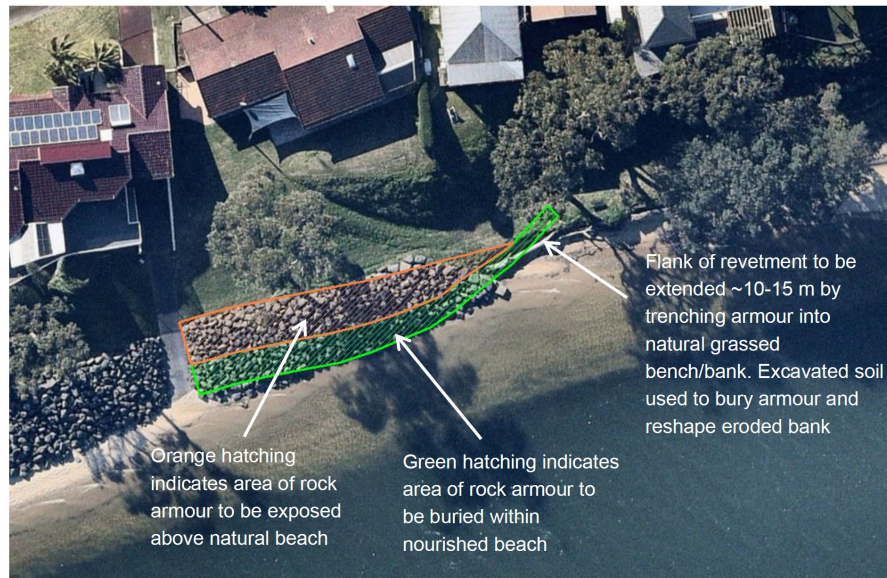


Figure 5.6 Indicative modified revetment concept alignment

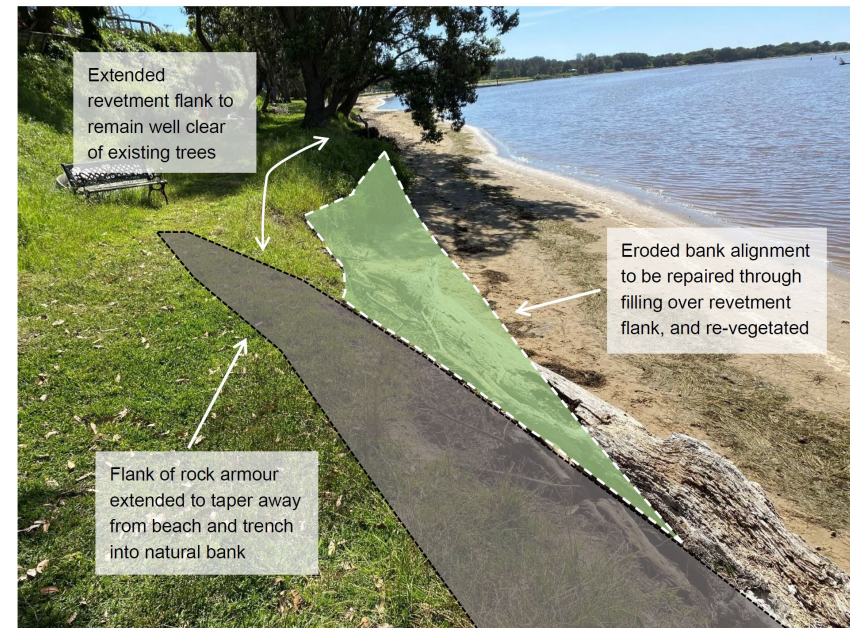


Figure 5.7 Indicative modified revetment flank concept alignment



Figure 5.1 Overview of recommended management works

