

## Shoalhaven Traffic Committee

**Meeting Date:** Tuesday, 13 June, 2023

**Location:** Manyana Meeting Room, City Administrative Centre, Bridge Road, Nowra

**Time:** 9:30 am

**Please note:** Council's Code of Meeting Practice permits the electronic recording and broadcast of the proceedings of meetings of the Council which are open to the public. Your attendance at this meeting is taken as consent to the possibility that your image and/or voice may be recorded and broadcast to the public.

### Agenda

**1. Apologies**

**2. Confirmation of Minutes**

- Shoalhaven Traffic Committee - 9 May 2023 ..... 1

**3. Business Arising from Previous Minutes**

**4. Reports of the Convenor**

TC23.29	Traffic Signals and Associated Works - St. Vincent Street - South Street - Ulladulla (PN 3756) .....	4
TC23.30	Traffic Signals and Associated Works - Princes Highway - South Street - Ulladulla (PN 3759) .....	13
TC23.31	Linemarking - Elizabeth Drive - Vincentia (PN 3760).....	26
TC23.32	Parking Restrictions - Church Street - Milton (PN 3761).....	39
TC23.33	Parking Restrictions - Railway Street - Bomaderry (PN 3762).....	41
TC23.34	Linemarking & Parking Restrictions - River Road - Sussex Inlet (PN 3763).....	46

**5. General Business**

**Note:** The next meeting will be held on Tuesday 11 July 2023.

**Membership**

Mr David Pieresko – Convenor  
Clr Patricia White  
Clr Matthew Norris  
Ms Nicole Brodie  
Sergeant Kelly Thomas  
Ms Shelley Hancock MP (or representative)  
Mr Stuart Coughlan

The Shoalhaven Traffic Committee is a technical review committee, not a committee of Council under the Local Government Act 1993. Transport for NSW (TfNSW) has delegated certain powers to Council under the Transport Administration Act 1988 (Section 50). A condition of this delegation is that Council must take into account the Traffic Committee recommendations.

There are four formal members of the Traffic Committee, *each of whom has a single vote only*. The members are representatives from:

- NSW Police Force
- TfNSW
- Shoalhaven City Council
- Local State Member of Parliament (for the location of the issue to be voted upon)

If TfNSW or NSW Police Force disagrees with any Traffic Committee recommendation, or Council's resolution (on any Traffic Committee recommendation), they may lodge an appeal with the Regional Traffic Committee for determination. The appeal must be lodged in writing within 14 days of the date of notification in writing. Any action relative to any issue under appeal must cease until the matter is determined. The Regional Traffic Committee is chaired by an independent chairperson and submissions and representations are welcomed from all interested parties.

Council cannot amend a Traffic Committee recommendation. The Council can only: adopt the Traffic Committee recommendation; not adopt the Traffic Committee recommendation, or request the Traffic Committee reconsider the issue.

**The full guide to the delegation to Council's for the regulation of traffic can be viewed at [TfNSW Website](#)**



## MINUTES OF THE SHOALHAVEN TRAFFIC COMMITTEE

**Meeting Date:** Tuesday, 9 May 2023  
**Location:** Manyana Meeting Room, City Administrative Centre, Bridge Road, Nowra  
**Time:** 9:35 am

The following members were present:

Convenor Bianca van der Merwe – Coordinator Engineering Design  
Clr Patricia White  
Ms Nicole Brodie – TfNSW  
Mr Lee Birrer – TfNSW  
Mr Stuart Coughlan (Representing Mr Gareth Ward MP)  
Sgt Simon Pugh – NSW Police

Others present:

Ms Simone King – Premier Motor Services (Remotely)  
Mr Craig Exton – Manager – Technical Services

Note: Ms Liza Butler MP submitted votes on the items following the conclusion of the meeting, the date being 11 May 2023.

### Apologies / Leave of Absence

Nil

### Confirmation of the Minutes

**RESOLVED** (By consent)

That the Minutes of the Shoalhaven Traffic Committee held on Tuesday 11 April 2023 be confirmed.

CARRIED

### Business Arising from Previous Minutes

Nil

## REPORTS OF THE CONVENOR

**TC23.26** Shared User Path and Raised Pedestrian (Wombat)  
Crossing - South Street - Camden Street - Ulladulla (PN  
3755)

**HPERM Ref:**  
**D23/163593**

Ms Nicole Brodie – TfNSW – noted that it is preferable to have lighting installed along the pedestrian crossing at South Street and Camden Street, Ulladulla.

Council staff advised they would investigate the installation of lighting at the pedestrian crossing if it is not currently proposed.

### Recommendation

That:

1. The Chief Executive Officer (Director City Services) be advised that the Shoalhaven Traffic Committee has no objection to the proposed Shared User Path and Raised Pedestrian (Wombat) Crossing at South Street and Camden Street, Ulladulla as per Plan No. D23/163601.
2. The recommendation be approved by the Director City Services under delegated authority from Shoalhaven City Council - refer MIN21.411

### RECOMMENDATION (By consent)

That:

1. The Chief Executive Officer (Director City Services) be advised that the Shoalhaven Traffic Committee has no objection to the proposed Shared User Path and Raised Pedestrian (Wombat) Crossing at South Street and Camden Street, Ulladulla as per Plan No. D23/163601.
2. The recommendation be approved by the Director City Services under delegated authority from Shoalhaven City Council - refer MIN21.411

CARRIED

*Note: This Recommendation was approved by the Director City Services 12 May 2023*

### TC23.27 Private Use of Public Parking - 29 Kinghorne Street - Nowra (PN 3757)

HPERM Ref:  
D23/164553

### Recommendation

That:

1. The Chief Executive Officer (Director City Services) be advised that the Shoalhaven Traffic Committee has no objection to the temporary use of 12 parking spaces within the Stewart Place carpark, behind 29 Kinghorne Street, Nowra for a period of four (4) weeks during maintenance works to the Holt Centre, as per Document No. D23/164555; subject to the following:
  - a. Payment of associated fees in accordance with Council's Policy for *Private Use of Public Parking* [POL22/110](#).
  - b. The provision of a pedestrian ramp to allow wheelchairs / scooters access to the arcade through the Holt Centre;
  - c. The provision of commercial waste services to the Holt Centre, allowing existing commercial front loaded bins to be serviced for the duration of the works;
  - d. The continuation of deliveries to businesses located within and adjacent to the Holt Centre due to the removal of the loading zone for the duration of works.
2. The recommendation be approved by the Director City Services under delegated authority from Shoalhaven City Council - refer MIN21.411

### RECOMMENDATION (By consent)

That:

1. The Chief Executive Officer (Director City Services) be advised that the Shoalhaven Traffic

Committee has no objection to the temporary use of 12 parking spaces within the Stewart Place carpark, behind 29 Kinghorne Street, Nowra for a period of four (4) weeks during maintenance works to the Holt Centre, as per Document No. D23/164555; subject to the following:

- a. Payment of associated fees in accordance with Council's Policy for *Private Use of Public Parking* [POL22/110](#).
  - b. The provision of a pedestrian ramp to allow wheelchairs / scooters access to the arcade through the Holt Centre;
  - c. The provision of commercial waste services to the Holt Centre, allowing existing commercial front loaded bins to be serviced for the duration of the works;
  - d. The continuation of deliveries to businesses located within and adjacent to the Holt Centre due to the removal of the loading zone for the duration of works.
2. The recommendation be approved by the Director City Services under delegated authority from Shoalhaven City Council - refer MIN21.411

CARRIED

*Note: This Recommendation was approved by the Director City Services 12 May 2023*

**TC23.28 Parking Restrictions - River Road - Sussex Inlet (PN 3758)**

**HPERM Ref: D23/164782**

**Recommendation**

That:

1. The Chief Executive Officer (Director City Services) be advised that the Shoalhaven Traffic Committee has no objection to the proposed Parking Restrictions at River Road, Sussex Inlet as per Plan No. D23/164791.
2. The recommendation be approved by the Director City Services under delegated authority from Shoalhaven City Council - refer MIN21.411

**RECOMMENDATION (By consent)**

That:

1. The Chief Executive Officer (Director City Services) be advised that the Shoalhaven Traffic Committee has no objection to the proposed Parking Restrictions at River Road, Sussex Inlet as per Plan No. D23/164791.
2. The recommendation be approved by the Director City Services under delegated authority from Shoalhaven City Council - refer MIN21.411

CARRIED

*Note: This Recommendation was approved by the Director City Services 12 May 2023*

There being no further business, the meeting concluded, the time being 10:03am.

Bianca van der Merwe  
CONVENOR

## **TC23.29 Traffic Signals and Associated Works - St. Vincent Street - South Street - Ulladulla (PN 3756)**

**HPERM Ref:** D23/163879

**Convenor:** Bianca van der Merwe

**Attachments:** 1. PN 3756 Plans [↓](#)

### **Recommendation (Item to be determined under delegated authority)**

That:

1. The Chief Executive Officer (Director City Services) be advised that the Shoalhaven Traffic Committee has no objection to the proposed Traffic Signals and Associated Works at St. Vincent Street and South Street, Ulladulla, as per Plan No. D23/163887.
2. The recommendation be approved by the Director City Services under delegated authority from Shoalhaven City Council - refer MIN21.411

### **Background:**

Shoalhaven City Council has received funding under the Federal Stimulus Road Safety Program – Pedestrian Safety at School Zones to design and construct a signalised intersection and associated improvements at St. Vincent and South Streets in Ulladulla.

This is the final stage of intersection upgrade works following the fatal accident involving a student from Ulladulla High School which took place in June 2020.

A layout plan has been submitted to the Committee for consideration.

### **Details of Submission:**

The extent of this proposal would involve the installation of traffic signals at the intersection of St. Vincent Street and South Street in Ulladulla, adjacent to Ulladulla High School.

Additional works would involve the reconstruction of kerb & gutter on the northern side of the intersection, installation of kerb ramps on all legs of the intersection, construction of new footpath, resurfacing of the roadway and the installation of line marking and signage associated with the changes to the intersection configuration.

### **Consultation:**

Council commenced consultation in June 2021 to discuss the proposal. Consultation included affected residents, landowners, Ulladulla High School, including P&C, other stakeholders, and the Ulladulla and Districts Community Forum. To date, Council has received no submissions.

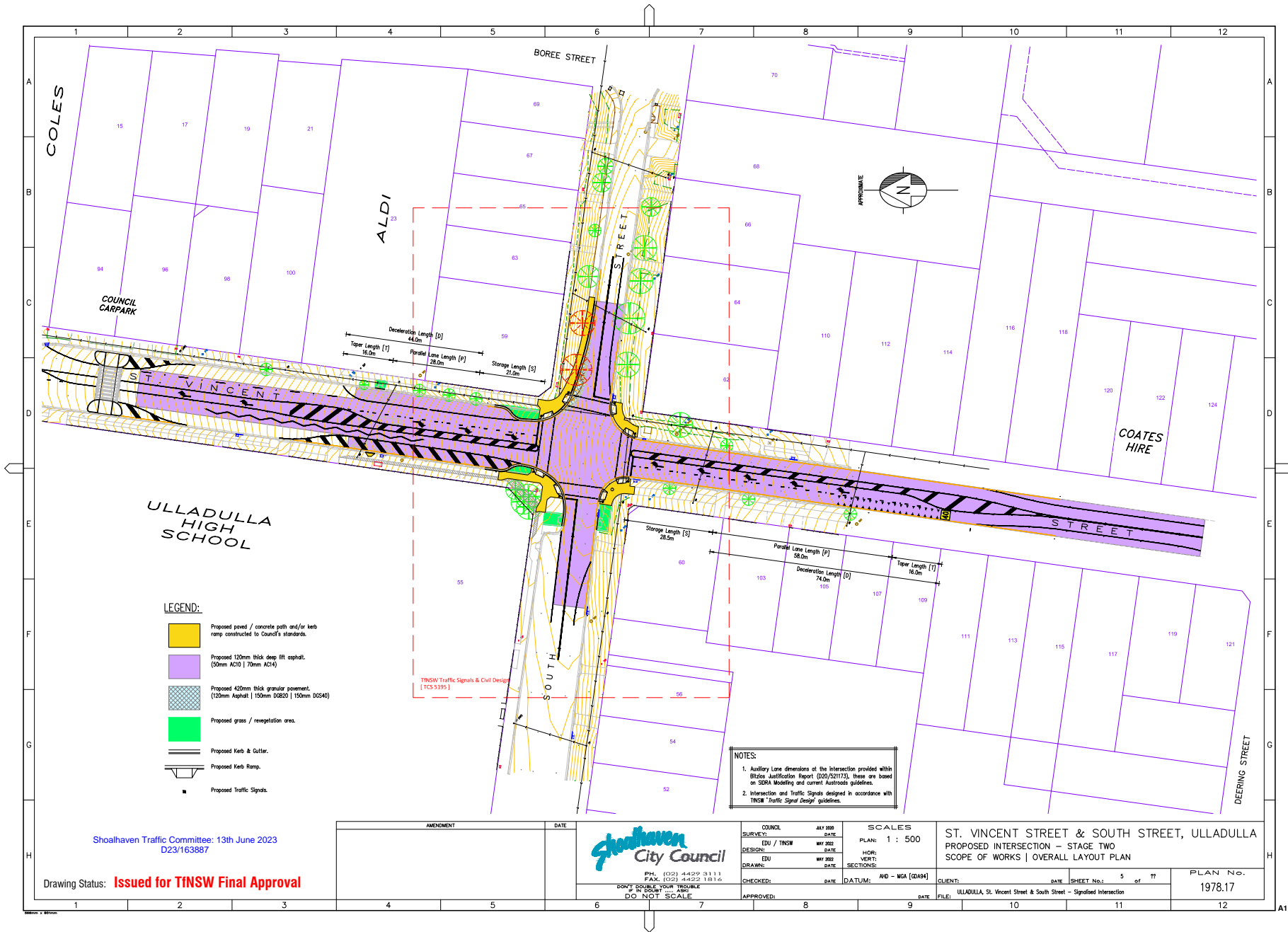
TC23.29

**Risk Implications:**

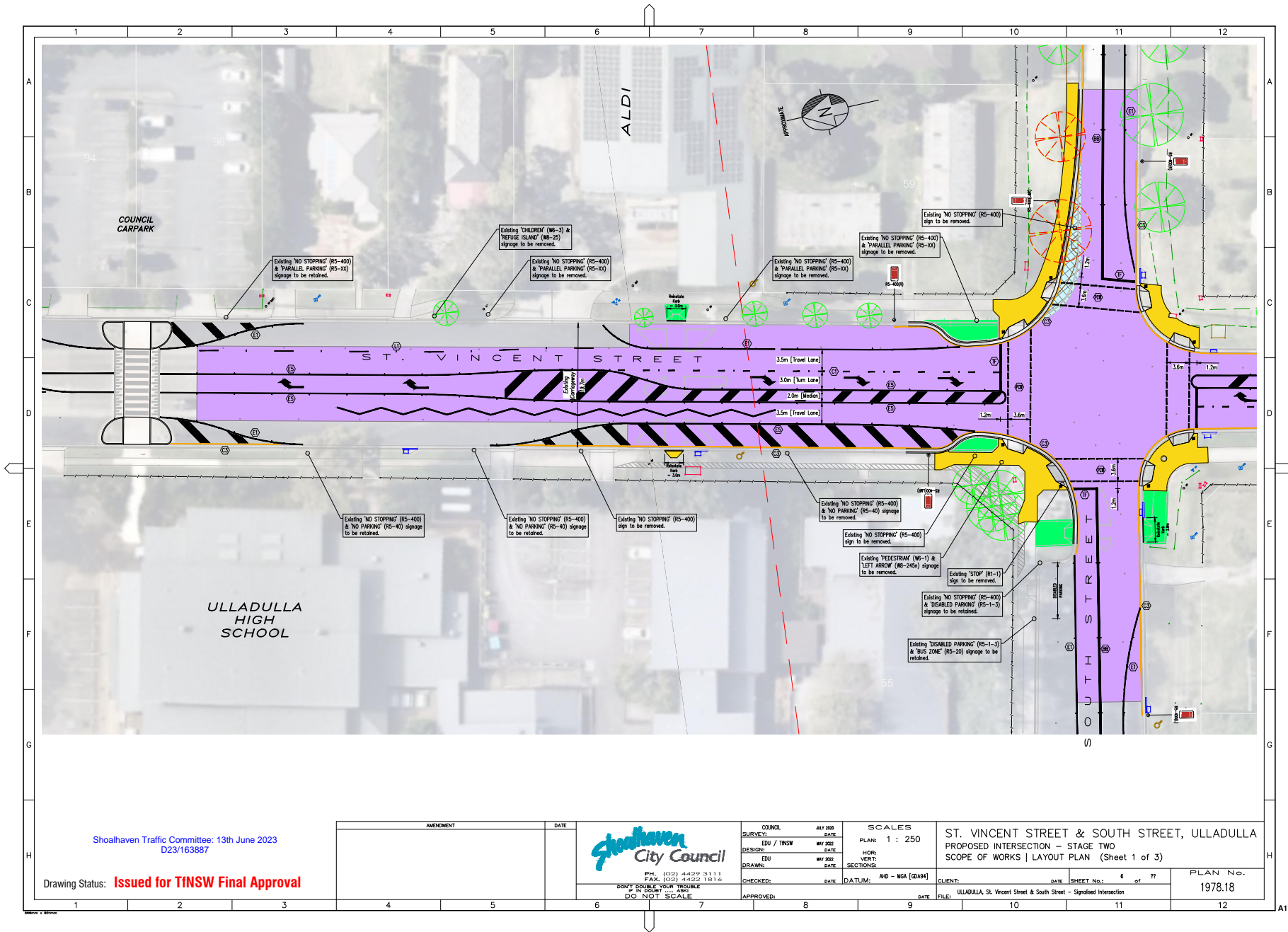
This proposal would provide more protection and result in safer road crossing for pedestrians and cyclist (particularly school children) at the intersection of St. Vincent Street and South Street.

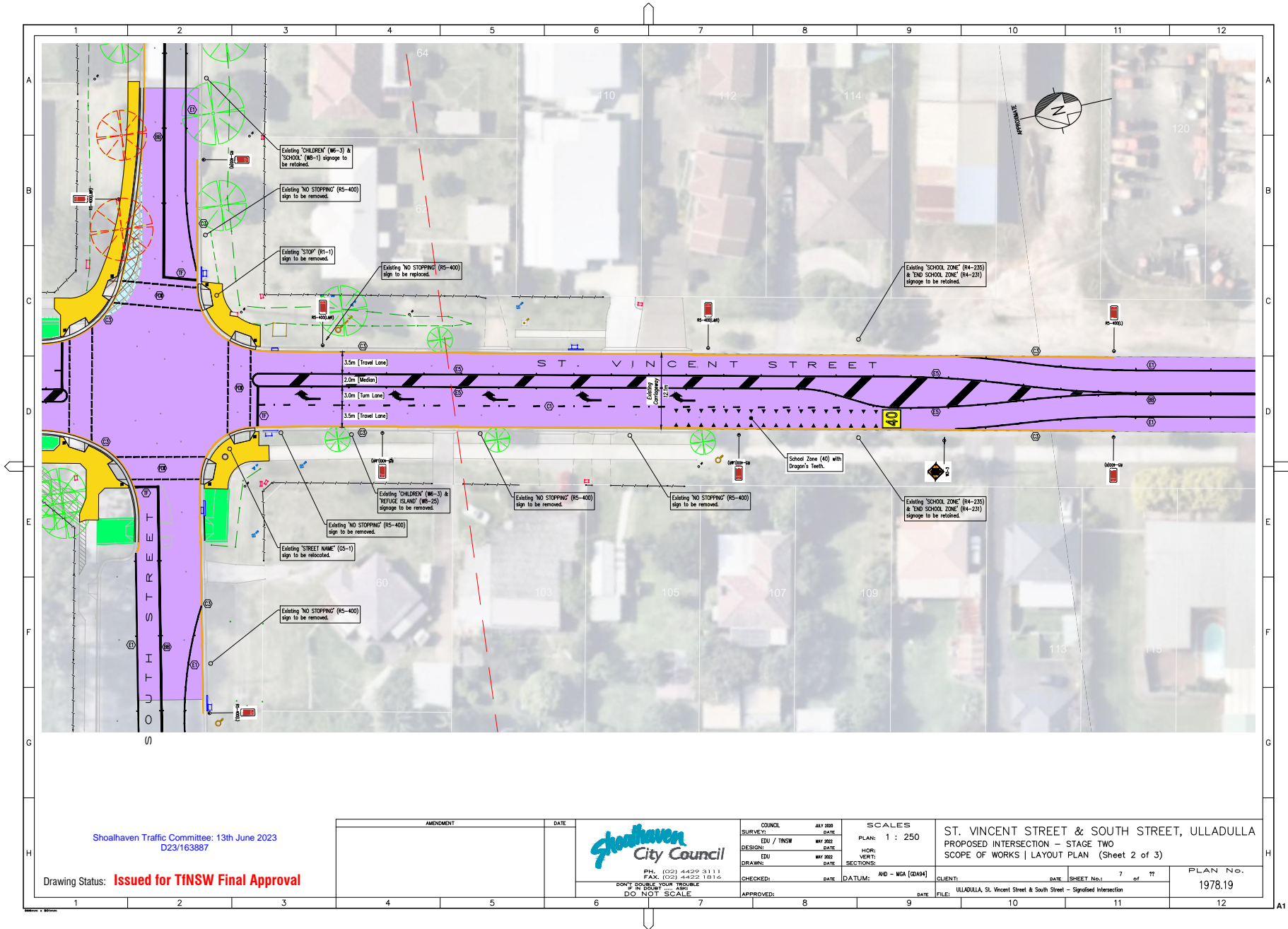
**Financial Implications:**

The proposal will be funded by the Federal Stimulus Road Safety Program – Pedestrian Safety at School Zones provided to Council by the NSW Government.

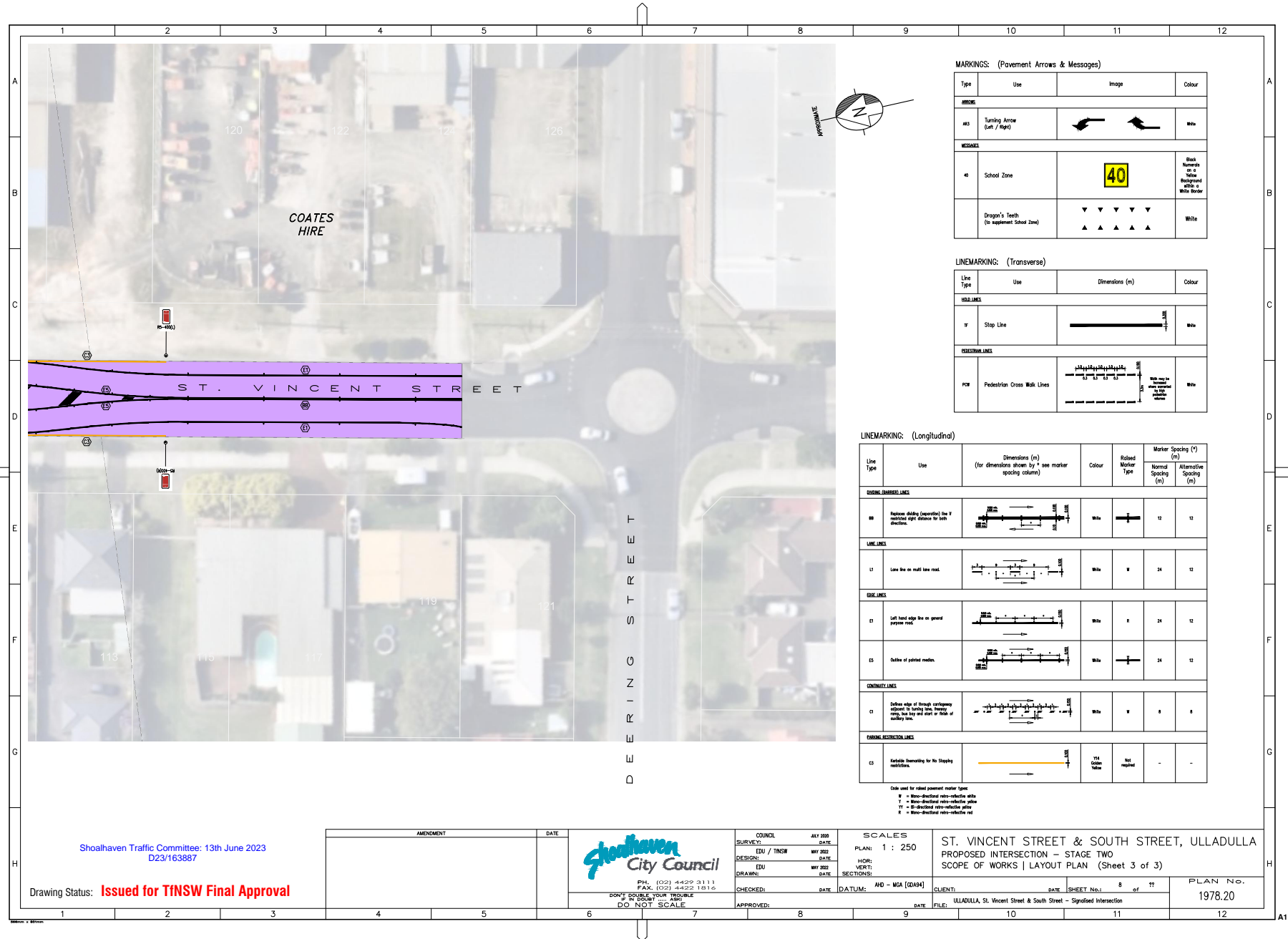


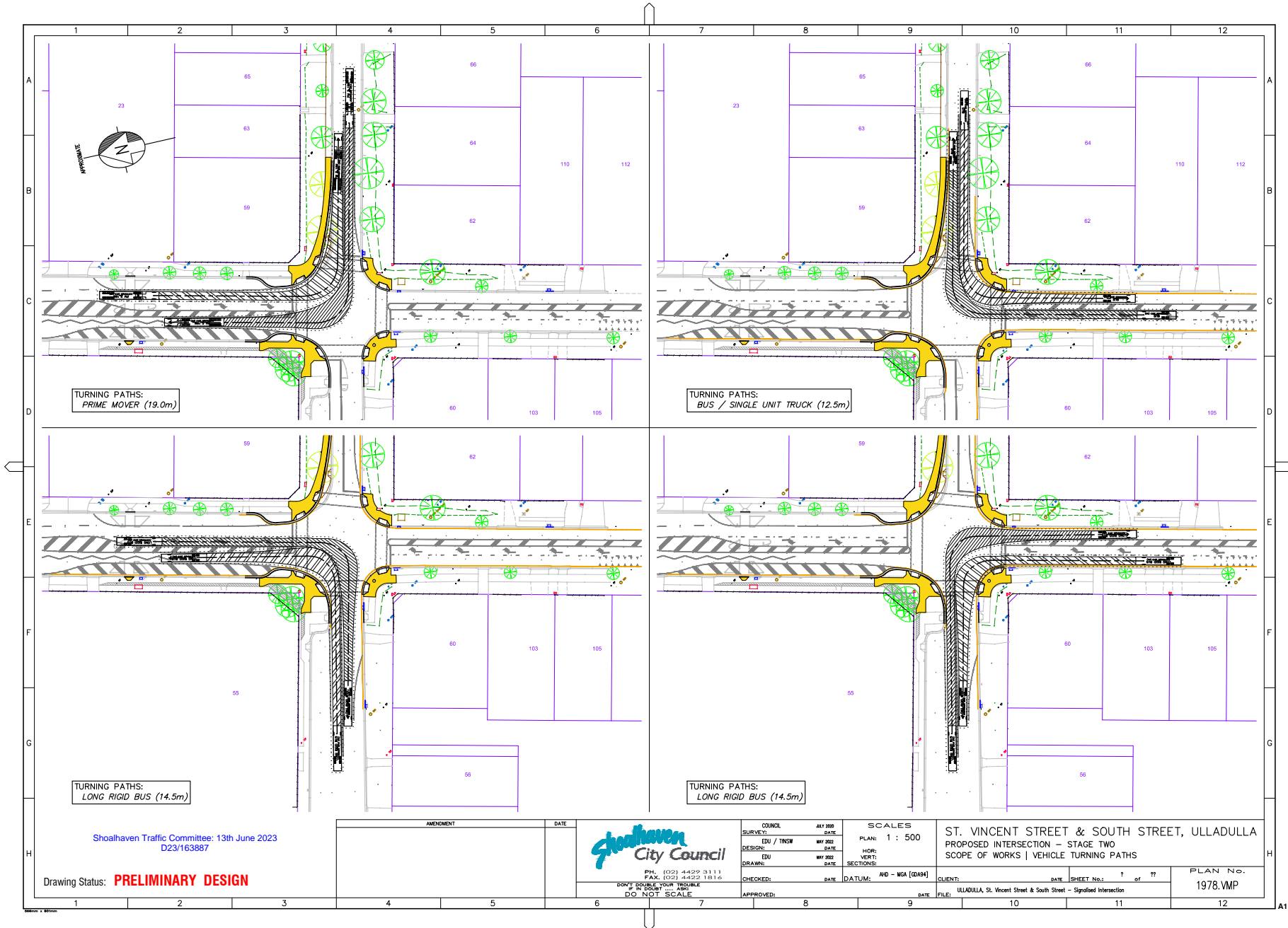




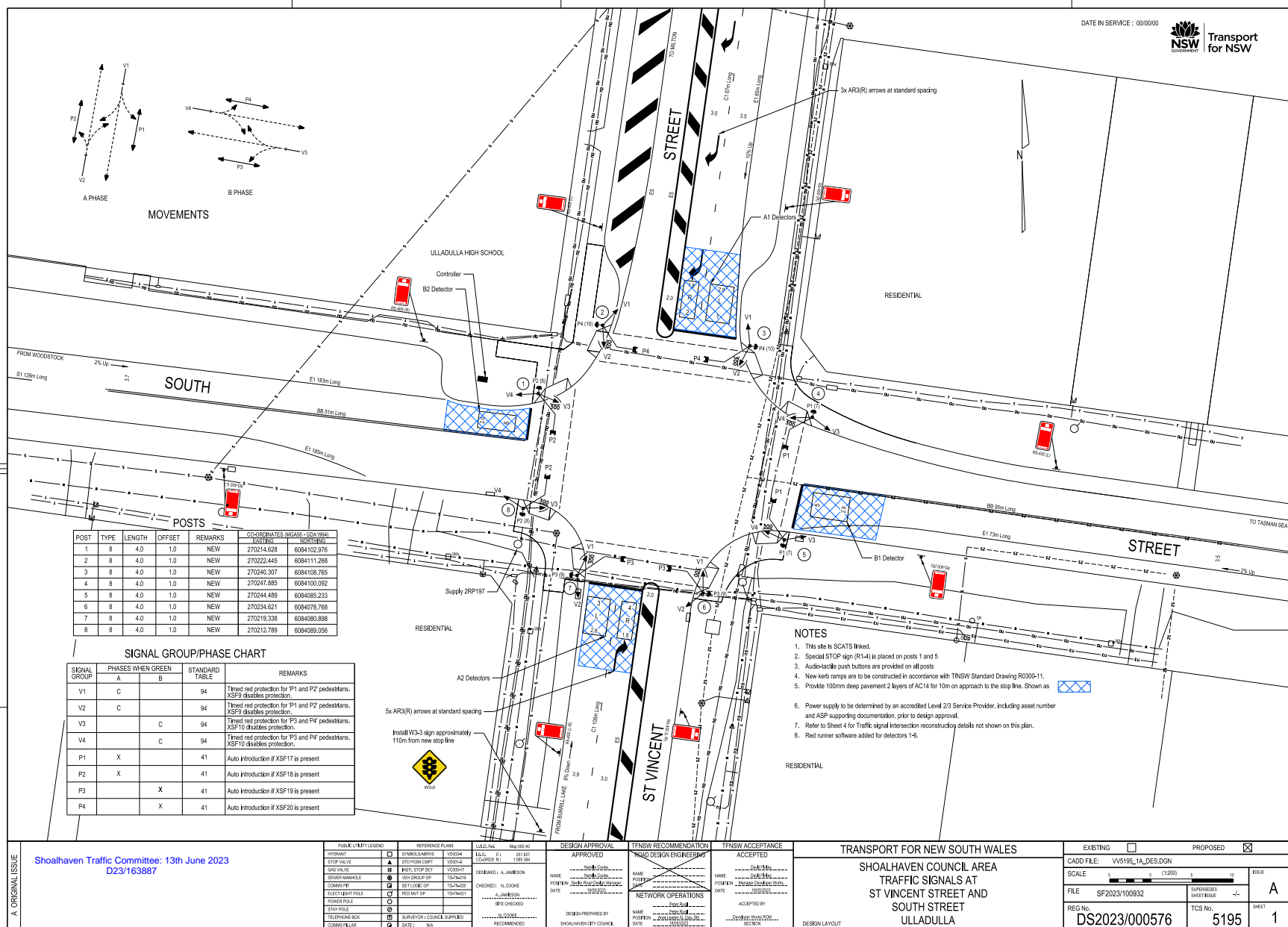








TCS 5195



19050303 120601 PM

DATE IN SERVICE : 00/00/00



Transport for NSW

A. ORIGINAL ISSUE	Shoalhaven Traffic Committee: 13th June 2023 D23/163887		<b>DESIGN APPROVAL</b> APPROVED: [Signature] NAME: [Name] POSITION: [Position] DATE: [Date]		<b>TNSW RECOMMENDATION</b> RECOMMENDED: [Signature] NAME: [Name] POSITION: [Position] DATE: [Date]		<b>TNSW ACCEPTANCE</b> ACCEPTED: [Signature] NAME: [Name] POSITION: [Position] DATE: [Date]		<b>TRANSPORT FOR NEW SOUTH WALES</b> SHOALHAVEN COUNCIL AREA TRAFFIC SIGNALS AT ST VINCENT STREET AND SOUTH STREET ULLADULLA		EXISTING <input type="checkbox"/> PROPOSED <input checked="" type="checkbox"/> CADD FILE: VV5195_1A_DES.DGN SCALE: 1:1000 FILE: SF2023/100932 REG NO: DS2023/000576 TCS No. 5195 SHEET 1	
	<b>PUBLIC UTILITY LEGEND</b> HYDRAULIC: [Symbol] STOP VALVE: [Symbol] GAS VALVE: [Symbol] WATER MAINS: [Symbol] CABLES: [Symbol] ELECTRICITY: [Symbol] POWER POLE: [Symbol] STAY POLE: [Symbol] TELEPHONE BOX: [Symbol] CABLE TIE: [Symbol]		<b>REFERENCE PLANS</b> L10004: [Symbol] L10005: [Symbol] L10006: [Symbol] L10007: [Symbol] L10008: [Symbol] L10009: [Symbol] L10010: [Symbol] L10011: [Symbol] L10012: [Symbol] L10013: [Symbol] L10014: [Symbol] L10015: [Symbol] L10016: [Symbol] L10017: [Symbol] L10018: [Symbol] L10019: [Symbol] L10020: [Symbol] L10021: [Symbol] L10022: [Symbol] L10023: [Symbol] L10024: [Symbol] L10025: [Symbol] L10026: [Symbol] L10027: [Symbol] L10028: [Symbol] L10029: [Symbol] L10030: [Symbol] L10031: [Symbol] L10032: [Symbol] L10033: [Symbol] L10034: [Symbol] L10035: [Symbol] L10036: [Symbol] L10037: [Symbol] L10038: [Symbol] L10039: [Symbol] L10040: [Symbol] L10041: [Symbol] L10042: [Symbol] L10043: [Symbol] L10044: [Symbol] L10045: [Symbol] L10046: [Symbol] L10047: [Symbol] L10048: [Symbol] L10049: [Symbol] L10050: [Symbol] L10051: [Symbol] L10052: [Symbol] L10053: [Symbol] L10054: [Symbol] L10055: [Symbol] L10056: [Symbol] L10057: [Symbol] L10058: [Symbol] L10059: [Symbol] L10060: [Symbol] L10061: [Symbol] L10062: [Symbol] L10063: [Symbol] L10064: [Symbol] L10065: [Symbol] L10066: [Symbol] L10067: [Symbol] L10068: [Symbol] L10069: [Symbol] L10070: [Symbol] L10071: [Symbol] L10072: [Symbol] L10073: [Symbol] L10074: [Symbol] L10075: [Symbol] L10076: [Symbol] L10077: [Symbol] L10078: [Symbol] L10079: [Symbol] L10080: [Symbol] L10081: [Symbol] L10082: [Symbol] L10083: [Symbol] L10084: [Symbol] L10085: [Symbol] L10086: [Symbol] L10087: [Symbol] L10088: [Symbol] L10089: [Symbol] L10090: [Symbol] L10091: [Symbol] L10092: [Symbol] L10093: [Symbol] L10094: [Symbol] L10095: [Symbol] L10096: [Symbol] L10097: [Symbol] L10098: [Symbol] L10099: [Symbol] L10100: [Symbol] L10101: [Symbol] L10102: [Symbol] L10103: [Symbol] L10104: [Symbol] L10105: [Symbol] L10106: [Symbol] L10107: [Symbol] L10108: [Symbol] L10109: [Symbol] L10110: [Symbol] L10111: [Symbol] L10112: [Symbol] L10113: [Symbol] L10114: [Symbol] L10115: [Symbol] L10116: [Symbol] L10117: [Symbol] L10118: [Symbol] L10119: [Symbol] L10120: [Symbol] L10121: [Symbol] L10122: [Symbol] L10123: [Symbol] L10124: [Symbol] L10125: [Symbol] L10126: [Symbol] L10127: [Symbol] L10128: [Symbol] L10129: [Symbol] L10130: [Symbol] L10131: [Symbol] L10132: [Symbol] L10133: [Symbol] L10134: [Symbol] L10135: [Symbol] L10136: [Symbol] L10137: [Symbol] L10138: [Symbol] L10139: [Symbol] L10140: [Symbol] L10141: [Symbol] L10142: [Symbol] L10143: [Symbol] L10144: [Symbol] L10145: [Symbol] L10146: [Symbol] L10147: [Symbol] L10148: [Symbol] L10149: [Symbol] L10150: [Symbol] L10151: [Symbol] L10152: [Symbol] L10153: [Symbol] L10154: [Symbol] L10155: [Symbol] L10156: [Symbol] L10157: [Symbol] L10158: [Symbol] L10159: [Symbol] L10160: [Symbol] L10161: [Symbol] L10162: [Symbol] L10163: [Symbol] L10164: [Symbol] L10165: [Symbol] L10166: [Symbol] L10167: [Symbol] L10168: [Symbol] L10169: [Symbol] L10170: [Symbol] L10171: [Symbol] L10172: [Symbol] L10173: [Symbol] L10174: [Symbol] L10175: [Symbol] L10176: [Symbol] L10177: [Symbol] L10178: [Symbol] L10179: [Symbol] L10180: [Symbol] L10181: [Symbol] L10182: [Symbol] L10183: [Symbol] L10184: [Symbol] L10185: [Symbol] L10186: [Symbol] L10187: [Symbol] L10188: [Symbol] L10189: [Symbol] L10190: [Symbol] L10191: [Symbol] L10192: [Symbol] L10193: [Symbol] L10194: [Symbol] L10195: [Symbol] L10196: [Symbol] L10197: [Symbol] L10198: [Symbol] L10199: [Symbol] L10200: [Symbol] L10201: [Symbol] L10202: [Symbol] L10203: [Symbol] L10204: [Symbol] L10205: [Symbol] L10206: [Symbol] L10207: [Symbol] L10208: [Symbol] L10209: [Symbol] L10210: [Symbol] L10211: [Symbol] L10212: [Symbol] L10213: [Symbol] L10214: [Symbol] L10215: [Symbol] L10216: [Symbol] L10217: [Symbol] L10218: [Symbol] L10219: [Symbol] L10220: [Symbol] L10221: [Symbol] L10222: [Symbol] L10223: [Symbol] L10224: [Symbol] L10225: [Symbol] L10226: [Symbol] L10227: [Symbol] L10228: [Symbol] L10229: [Symbol] L10230: [Symbol] L10231: [Symbol] L10232: [Symbol] L10233: [Symbol] L10234: [Symbol] L10235: [Symbol] L10236: [Symbol] L10237: [Symbol] L10238: [Symbol] L10239: [Symbol] L10240: [Symbol] L10241: [Symbol] L10242: [Symbol] L10243: [Symbol] L10244: [Symbol] L10245: [Symbol] L10246: [Symbol] L10247: [Symbol] L10248: [Symbol] L10249: [Symbol] L10250: [Symbol] L10251: [Symbol] L10252: [Symbol] L10253: [Symbol] L10254: [Symbol] L10255: [Symbol] L10256: [Symbol] L10257: [Symbol] L10258: [Symbol] L10259: [Symbol] L10260: [Symbol] L10261: [Symbol] L10262: [Symbol] L10263: [Symbol] L10264: [Symbol] L10265: [Symbol] L10266: [Symbol] L10267: [Symbol] L10268: [Symbol] L10269: [Symbol] L10270: [Symbol] L10271: [Symbol] L10272: [Symbol] L10273: [Symbol] L10274: [Symbol] L10275: [Symbol] L10276: [Symbol] L10277: [Symbol] L10278: [Symbol] L10279: [Symbol] L10280: [Symbol] L10281: [Symbol] L10282: [Symbol] L10283: [Symbol] L10284: [Symbol] L10285: [Symbol] L10286: [Symbol] L10287: [Symbol] L10288: [Symbol] L10289: [Symbol] L10290: [Symbol] L10291: [Symbol] L10292: [Symbol] L10293: [Symbol] L10294: [Symbol] L10295: [Symbol] L10296: [Symbol] L10297: [Symbol] L10298: [Symbol] L10299: [Symbol] L10300: [Symbol] L10301: [Symbol] L10302: [Symbol] L10303: [Symbol] L10304: [Symbol] L10305: [Symbol] L10306: [Symbol] L10307: [Symbol] L10308: [Symbol] L10309: [Symbol] L10310: [Symbol] L10311: [Symbol] L10312: [Symbol] L10313: [Symbol] L10314: [Symbol] L10315: [Symbol] L10316: [Symbol] L10317: [Symbol] L10318: [Symbol] L10319: [Symbol] L10320: [Symbol] L10321: [Symbol] L10322: [Symbol] L10323: [Symbol] L10324: [Symbol] L10325: [Symbol] L10326: [Symbol] L10327: [Symbol] L10328: [Symbol] L10329: [Symbol] L10330: [Symbol] L10331: [Symbol] L10332: [Symbol] L10333: [Symbol] L10334: [Symbol] L10335: [Symbol] L10336: [Symbol] L10337: [Symbol] L10338: [Symbol] L10339: [Symbol] L10340: [Symbol] L10341: [Symbol] L10342: [Symbol] L10343: [Symbol] L10344: [Symbol] L10345: [Symbol] L10346: [Symbol] L10347: [Symbol] L10348: [Symbol] L10349: [Symbol] L10350: [Symbol] L10351: [Symbol] L10352: [Symbol] L10353: [Symbol] L10354: [Symbol] L10355: [Symbol] L10356: [Symbol] L10357: [Symbol] L10358: [Symbol] L10359: [Symbol] L10360: [Symbol] L10361: [Symbol] L10362: [Symbol] L10363: [Symbol] L10364: [Symbol] L10365: [Symbol] L10366: [Symbol] L10367: [Symbol] L10368: [Symbol] L10369: [Symbol] L10370: [Symbol] L10371: [Symbol] L10372: [Symbol] L10373: [Symbol] L10374: [Symbol] L10375: [Symbol] L10376: [Symbol] L10377: [Symbol] L10378: [Symbol] L10379: [Symbol] L10380: [Symbol] L10381: [Symbol] L10382: [Symbol] L10383: [Symbol] L10384: [Symbol] L10385: [Symbol] L10386: [Symbol] L10387: [Symbol] L10388: [Symbol] L10389: [Symbol] L10390: [Symbol] L10391: [Symbol] L10392: [Symbol] L10393: [Symbol] L10394: [Symbol] L10395: [Symbol] L10396: [Symbol] L10397: [Symbol] L10398: [Symbol] L10399: [Symbol] L10400: [Symbol] L10401: [Symbol] L10402: [Symbol] L10403: [Symbol] L10404: [Symbol] L10405: [Symbol] L10406: [Symbol] L10407: [Symbol] L10408: [Symbol] L10409: [Symbol] L10410: [Symbol] L10411: [Symbol] L10412: [Symbol] L10413: [Symbol] L10414: [Symbol] L10415: [Symbol] L10416: [Symbol] L10417: [Symbol] L10418: [Symbol] L10419: [Symbol] L10420: [Symbol] L10421: [Symbol] L10422: [Symbol] L10423: [Symbol] L10424: [Symbol] L10425: [Symbol] L10426: [Symbol] L10427: [Symbol] L10428: [Symbol] L10429: [Symbol] L10430: [Symbol] L10431: [Symbol] L10432: [Symbol] L10433: [Symbol] L10434: [Symbol] L10435: [Symbol] L10436: [Symbol] L10437: [Symbol] L10438: [Symbol] L10439: [Symbol] L10440: [Symbol] L10441: [Symbol] L10442: [Symbol] L10443: [Symbol] L10444: [Symbol] L10445: [Symbol] L10446: [Symbol] L10447: [Symbol] L10448: [Symbol] L10449: [Symbol] L10450: [Symbol] L10451: [Symbol] L10452: [Symbol] L10453: [Symbol] L10454: [Symbol] L10455: [Symbol] L10456: [Symbol] L10457: [Symbol] L10458: [Symbol] L10459: [Symbol] L10460: [Symbol] L10461: [Symbol] L10462: [Symbol] L10463: [Symbol] L10464: [Symbol] L10465: [Symbol] L10466: [Symbol] L10467: [Symbol] L10468: [Symbol] L10469: [Symbol] L10470: [Symbol] L10471: [Symbol] L10472: [Symbol] L10473: [Symbol] L10474: [Symbol] L10475: [Symbol] L10476: [Symbol] L10477: [Symbol] L10478: [Symbol] L10479: [Symbol] L10480: [Symbol] L10481: [Symbol] L10482: [Symbol] L10483: [Symbol] L10484: [Symbol] L10485: [Symbol] L10486: [Symbol] L10487: [Symbol] L10488: [Symbol] L10489: [Symbol] L10490: [Symbol] L10491: [Symbol] L10492: [Symbol] L10493: [Symbol] L10494: [Symbol] L10495: [Symbol] L10496: [Symbol] L10497: [Symbol] L10498: [Symbol] L10499: [Symbol] L10500: [Symbol] L10501: [Symbol] L10502: [Symbol] L10503: [Symbol] L10504: [Symbol] L10505: [Symbol] L10506: [Symbol] L10507: [Symbol] L10508: [Symbol] L10509: [Symbol] L10510: [Symbol] L10511: [Symbol] L10512: [Symbol] L10513: [Symbol] L10514: [Symbol] L10515: [Symbol] L10516: [Symbol] L10517: [Symbol] L10518: [Symbol] L10519: [Symbol] L10520: [Symbol] L10521: [Symbol] L10522: [Symbol] L10523: [Symbol] L10524: [Symbol] L10525: [Symbol] L10526: [Symbol] L10527: [Symbol] L10528: [Symbol] L10529: [Symbol] L10530: [Symbol] L10531: [Symbol] L10532: [Symbol] L10533: [Symbol] L10534: [Symbol] L10535: [Symbol] L10536: [Symbol] L10537: [Symbol] L10538: [Symbol] L10539: [Symbol] L10540: [Symbol] L10541: [Symbol] L10542: [Symbol] L10543: [Symbol] L10544: [Symbol] L10545: [Symbol] L10546: [Symbol] L10547: [Symbol] L10548: [Symbol] L10549: [Symbol] L10550: [Symbol] L10551: [Symbol] L10552: [Symbol] L10553: [Symbol] L10554: [Symbol] L10555: [Symbol] L10556: [Symbol] L10557: [Symbol] L10558: [Symbol] L10559: [Symbol] L10560: [Symbol] L10561: [Symbol] L10562: [Symbol] L10563: [Symbol] L10564: [Symbol] L10565: [Symbol] L10566: [Symbol] L10567: [Symbol] L10568: [Symbol] L10569: [Symbol] L10570: [Symbol] L10571: [Symbol] L10572: [Symbol] L10573: [Symbol] L10574: [Symbol] L10575: [Symbol] L10576: [Symbol] L10577: [Symbol] L10578: [Symbol] L10579: [Symbol] L10580: [Symbol] L10581: [Symbol] L10582: [Symbol] L10583: [Symbol] L10584: [Symbol] L10585: [Symbol] L10586: [Symbol] L10587: [Symbol] L10588: [Symbol] L10589: [Symbol] L10590: [Symbol] L10591: [Symbol] L10592: [Symbol] L10593: [Symbol] L10594: [Symbol] L10595: [Symbol] L10596: [Symbol] L10597: [Symbol] L10598: [Symbol] L10599: [Symbol] L10600: [Symbol] L10601: [Symbol] L10602: [Symbol] L10603: [Symbol] L10604: [Symbol] L10605: [Symbol] L10606: [Symbol] L10607: [Symbol] L10608: [Symbol] L10609: [Symbol] L10610: [Symbol] L10611: [Symbol] L10612: [Symbol] L10613: [Symbol] L10614: [Symbol] L10615: [Symbol] L10616: [Symbol] L10617: [Symbol] L10618: [Symbol] L10619: [Symbol] L10620: [Symbol] L10621: [Symbol] L10622: [Symbol] L10623: [Symbol] L10624: [Symbol] L10625: [Symbol] L10626: [Symbol] L10627: [Symbol] L10628: [Symbol] L10629: [Symbol] L10630: [Symbol] L10631: [Symbol] L10632: [Symbol] L10633: [Symbol] L10634: [Symbol] L10635: [Symbol] L10636: [Symbol] L10637: [Symbol] L10638: [Symbol] L10639: [Symbol] L10640: [Symbol] L10641: [Symbol] L10642: [Symbol] L10643: [Symbol] L10644: [Symbol] L10645: [Symbol] L10646: [Symbol] L10647: [Symbol] L10648: [Symbol] L10649: [Symbol] L10650: [Symbol] L10651: [Symbol] L10652: [Symbol] L10653: [Symbol] L10654: [Symbol] L10655: [Symbol] L10656: [Symbol] L10657: [Symbol] L10658: [Symbol] L10659: [Symbol] L10660: [Symbol] L10661: [Symbol] L10662: [Symbol] L10663: [Symbol] L10664: [Symbol] L10665: [Symbol] L10666: [Symbol] L10667: [Symbol] L10668: [Symbol] L10669: [Symbol] L10670: [Symbol] L10671: [Symbol] L10672: [Symbol] L10673: [Symbol] L10674: [Symbol] L10675: [Symbol] L10676: [Symbol] L10677: [Symbol] L10678: [Symbol] L10679: [Symbol] L10680: [Symbol] L10681: [Symbol] L10682: [Symbol] L10683: [Symbol] L10684: [Symbol] L10685: [Symbol] L10686: [Symbol] L10687: [Symbol] L10688: [Symbol] L10689: [Symbol] L10690: [Symbol] L10691: [Symbol] L10692: [Symbol] L10693: [Symbol] L10694: [Symbol] L10695: [Symbol] L10696: [Symbol] L10697: [Symbol] L10698: [Symbol] L10699: [Symbol] L10700: [Symbol] L10701: [Symbol] L10702: [Symbol									

TCS 5195

SIGN SCHEDULE			
ITEM	ITEM NAME	QUANTITY	COMMENTS
WS-1	TRAFFIC LIGHTS (SHAWCO)	1	SEE SHEET 1 FOR LOCATION
RS-400 (L)	NO STOPPING (LEFT)	3	
RS-400 (R)	NO STOPPING (RIGHT)	3	
RS-400 (L AND R)	NO STOPPING (LEFT AND RIGHT)	2	

PAYMENT MARKING SCHEDULE			
TYPE	SET OUT STRIPS	LENGTH (m)	COMMENTS
BS	-	80	SEE SHEET 1 FOR LOCATION
CT	170	-	SEE SHEET 1 FOR LOCATION
ES	MC30, MC40, MC50 AND MC60	180	
TP	-	24	SEE SHEET 1 FOR LOCATION
POH	-	110	SEE SHEET 1 FOR LOCATION
APR30	-	5x individual arrows	SEE SHEET 1 FOR LOCATION

KERB SCHEDULE			
KERB LABEL	KERB TYPE	SETOUT STRIPS	APPROX. LENGTH (m)
K01	SA	MC10	40
K02	SA	MC20	61

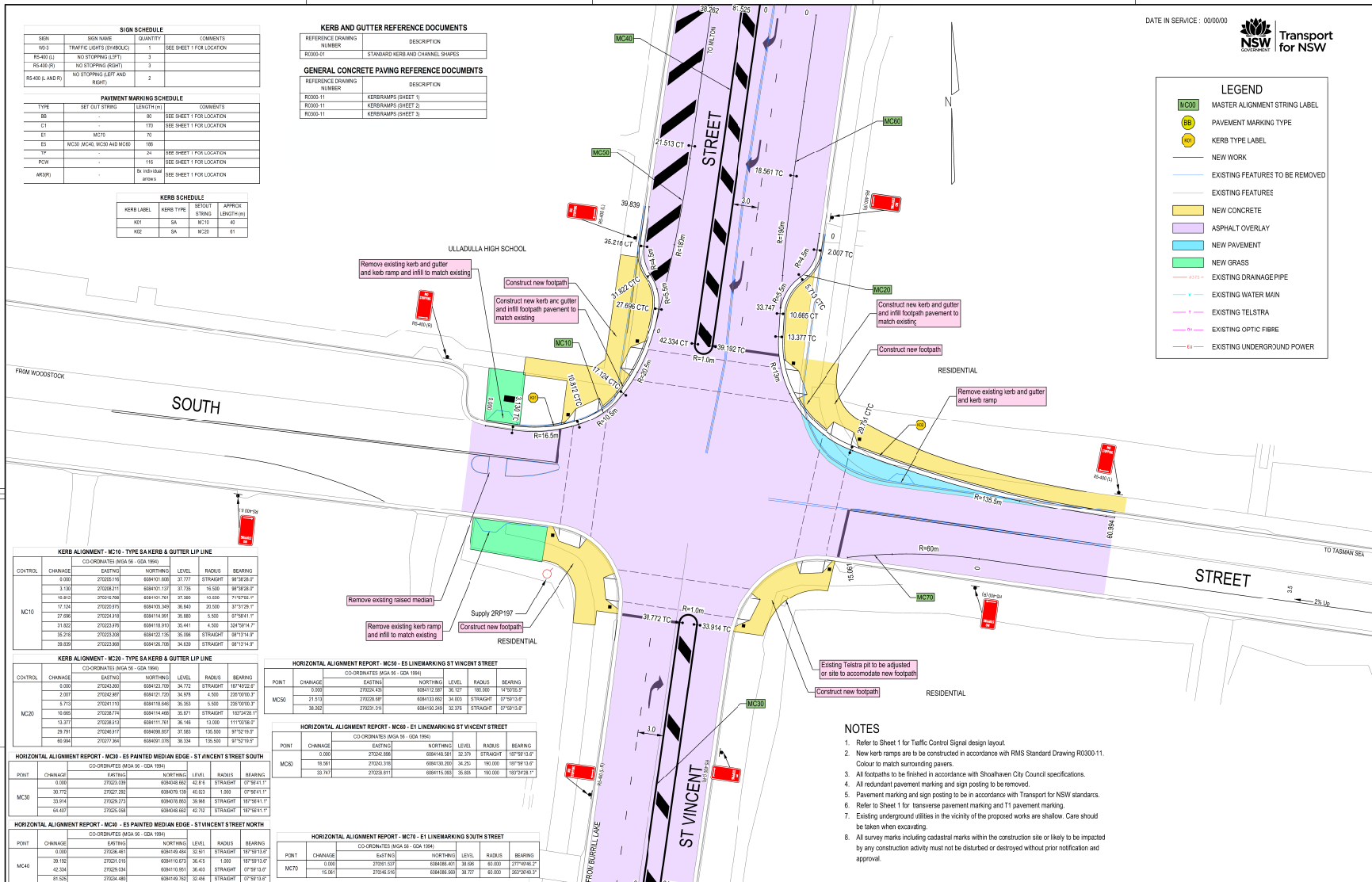
KERB AND GUTTER REFERENCE DOCUMENTS	
REFERENCE DRAWING NUMBER	DESCRIPTION
R0300-01	STANDARD KERB AND CHANNEL SHAPES

GENERAL CONCRETE PAVING REFERENCE DOCUMENTS	
REFERENCE DRAWING NUMBER	DESCRIPTION
R0300-11	KERBRAMPS (SHEET 1)
R0300-11	KERBRAMPS (SHEET 2)
R0300-11	KERBRAMPS (SHEET 3)

DATE IN SERVICE : 00/00/00



LEGEND	
<span style="border: 1px solid black; padding: 2px;">N000</span>	MASTER ALIGNMENT STRING LABEL
<span style="border: 1px solid black; padding: 2px;">BS</span>	PAVEMENT MARKING TYPE
<span style="border: 1px solid black; padding: 2px;">K01</span>	KERB TYPE LABEL
<span style="color: blue;">—</span>	NEW WORK
<span style="color: grey;">—</span>	EXISTING FEATURES TO BE REMOVED
<span style="color: grey;">—</span>	EXISTING FEATURES
<span style="background-color: yellow; border: 1px solid black; width: 20px; height: 10px;"></span>	NEW CONCRETE
<span style="background-color: purple; border: 1px solid black; width: 20px; height: 10px;"></span>	ASPHALT OVERLAY
<span style="background-color: lightblue; border: 1px solid black; width: 20px; height: 10px;"></span>	NEW PAVEMENT
<span style="background-color: lightgreen; border: 1px solid black; width: 20px; height: 10px;"></span>	NEW GRASS
<span style="color: red;">—</span>	EXISTING DRAINAGE PIPE
<span style="color: blue;">—</span>	EXISTING WATER MAIN
<span style="color: magenta;">—</span>	EXISTING TELSTRA
<span style="color: magenta;">—</span>	EXISTING OPTIC FIBRE
<span style="color: red;">—</span>	EXISTING UNDERGROUND POWER



# NOTES

1. Refer to Sheet 1 for Traffic Control Signal design layout.
2. New kerb ramps are to be constructed in accordance with RMS Standard Drawing R0300-11. Colour to match surrounding pavers.
3. All footpaths to be finished in accordance with Shoalhaven City Council specifications.
4. All redundant pavement marking and sign posting to be removed.
5. Pavement marking and sign posting to be in accordance with Transport for NSW standards.
6. Refer to Sheet 1 for transverse pavement marking and T1 pavement marking.
7. Existing underground utilities in the vicinity of the proposed works are shallow. Care should be taken when excavating.
8. All survey marks including cadastral marks within the construction site or likely to be impacted by any construction activity must not be disturbed or destroyed without prior notification and approval.

A. ORIGINAL ISSUE	Shoalhaven Traffic Committee: 13th June 2023 D23/163887		PUBLIC UTILITY LOG		REFERENCE NAME		U.S.D. Ref		Map 000 AL		L.S.D. - E		201 00		1 088 36		
			HYDRANT		SYMBOLS/SHAPES		V0500-01										
			STOP VALVE		SYMBOLS/SHAPES		V0500-01										
			SAND VALVE		SYMBOLS/SHAPES		V0500-01										
				BROW WASHES		SYMBOLS/SHAPES		V0500-01									
				COMB-FIT		SYMBOLS/SHAPES		V0500-01									
				ELECT LIGHT Poles		SYMBOLS/SHAPES		V0500-01									
				POWER POLE		SYMBOLS/SHAPES		V0500-01									
				STAY POLE		SYMBOLS/SHAPES		V0500-01									
				TELEPHONE BOX		SYMBOLS/SHAPES		V0500-01									
				CABLE PULLEY		SYMBOLS/SHAPES		V0500-01									

DESIGN APPROVAL		TFSW RECOMMENDATION		TFSW ACCEPTANCE	
APPROVED		ROAD DESIGN ENGINEER		ACCEPTED	
NAME: N. COOKE		NAME: N. COOKE		NAME: N. COOKE	
POSITION: Senior Road Design Manager		POSITION: Senior Road Design Manager		POSITION: Senior Road Design Manager	
DATE: 15/06/2023		DATE: 15/06/2023		DATE: 15/06/2023	
DESIGN PREPARED BY: N. COOKE		DESIGN PREPARED BY: N. COOKE		DESIGN PREPARED BY: N. COOKE	
ROAD DESIGN		ROAD DESIGN		ROAD DESIGN	
ENGINEERING SERVICES		ENGINEERING SERVICES		ENGINEERING SERVICES	
TECHNICAL AND PRODUCT SERVICES		TECHNICAL AND PRODUCT SERVICES		TECHNICAL AND PRODUCT SERVICES	

TRANSPORT FOR NEW SOUTH WALES	
SHOALHAVEN COUNCIL AREA	
TRAFFIC SIGNALS AT	
ST VINCENT STREET AND	
SOUTH STREET	
ULLADULLA	

EXISTING	PROPOSED
CADD FILE: V\5195_4A_DS.DGN	
SCALE: 1:1000	
FILE: SF2023\100932	
REG NO: DS2023\000576	
TCS No: 5195	
SHEET: 4	

TC23.29 - Attachment 1

## TC23.30 Traffic Signals and Associated Works - Princes Highway - South Street - Ulladulla (PN 3759)

**HPERM Ref:** D23/194957

**Convenor:** David Pieresko

**Attachments:** 1. PN 3759 Plans - Traffic Signals [↓](#)  
2. PN 3759 Plans - Parking [↓](#)

### Recommendation (Item to be determined under delegated authority)

That:

1. This report, Traffic Signal Plans (D23/194959), and the Parking Loss Plan (D23/194960) be received for information.
2. That Transport for NSW (TfNSW) undertake adequate community notification of these works.

### Background:

Transport for NSW (TfNSW) is planning the installation of a signalised intersection at Princes Highway and South Street in Ulladulla. This report has been requested by TfNSW to inform Traffic Committee members of these works and the associated loss in parking.

### Details of Submission:

The extent of this proposal will involve the installation of traffic signals at the intersection of Princes Highway and South Street in Ulladulla.

Additional works would involve the reconstruction of kerb and gutter and installation of kerb ramps on all legs of the intersection, construction of new footpath, resurfacing of the roadway and the installation of line markings and signage associated with the changes to the intersection configuration.

On-street parking adjacent to the intersection will be reconfigured to accommodate the required turning lanes, resulting in the loss of 24 spaces.

### Consultation:

This project is under the control and management of Transport for New South Wales (TfNSW), as a result Council has not been involved in any consultation with residents, businesses, landowners or stakeholders. As such, Council recommends that TfNSW undertake adequate community notification of these works.

### Risk Implications:

This proposal will assist in improving vehicle manoeuvrability and remove potential sources of congestion along the Princes Highway during peak periods.

It will result in a safer travel path at the intersection of Princes Highway and South Street, improving the safety of pedestrians and cyclists by providing more protection.

**Financial Implications:**

There are no financial implications to Council, signage for this proposal would be installed by Transport for NSW at their cost.



Shoalhaven Traffic Committee: 13/06/2023  
D23/194959



CITY OF SHOALHAVEN LGA  
**HW1 - PRINCES HIGHWAY**  
TRAFFIC SIGNALS AT INTERSECTION OF PRINCES HWY  
AND SOUTH ST, ULLADULLA



LOCALITY PLAN

MAP DATA ©2021 Google

**ROAD DESIGN**  
**DETAIL DESIGN**

ACCEPTED FOR CONSTRUCTION

THIS DRAWING MAY BE PREPARED IN COLOUR AND MAY BE INCOMPLETE IF COPIED  
0 5 10 15 20 25 30 35 40 45 50 55 60 65 70 75 80 85 90 95 100  
Sheet 01 of 10

DRAWING FILE LOCATION / NAME  
C:\Data\Workshop\HW1 - TCS at South St Ulladulla\Standards\Sheet Borders\A3\_Cover - GDA2020.dgn

PREPARED BY  
TRANSPORT FOR NSW  
INFRASTRUCTURE & PLACE  
TECHNICAL - SOUTH  
ENGINEERING SERVICES  
ROAD DESIGN SOUTHERN

DESIGNED  
SIGNED *Bridget Barker*  
NAME *B. BARKER*  
TITLE *ROAD DESIGNER*  
DATE *13-04-2022*

REVIEWED  
SIGNED *Caillin Egan*  
NAME *C. EGAN*  
TITLE *ROAD DESIGN MANAGER*  
DATE *20-04-2022*

VERIFIED  
SIGNED *Narelle Cooke*  
NAME *N. COOKE*  
TITLE *SENIOR ROAD DESIGN MANAGER*  
DATE *21-04-2022*

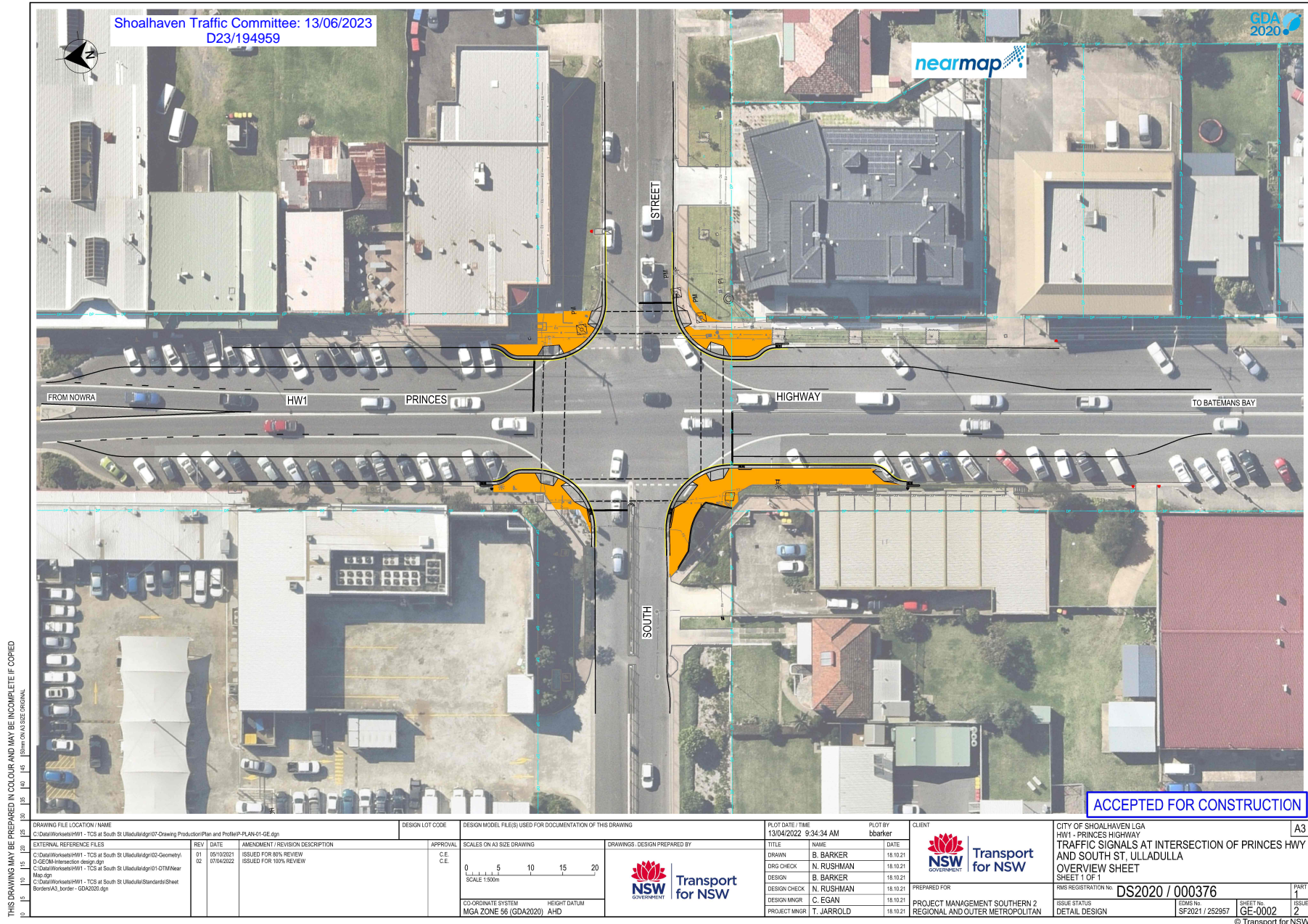
PLOT DATE / TIME  
1/15/2020 4:05:27 PM  
PLOT BY  
bbarker  
CLIENT  
TRANSPORT FOR NSW  
NAME *T. JARROLD*  
TITLE *PROJECT ENGINEER*  
VALIDATION AND ACCEPTANCE OF THESE  
DRAWINGS AND THE DESIGN SHOWN  
THEREON IS TO BE CARRIED OUT UNDER  
SEPARATE PROCESS

PREPARED FOR  
PROJECT MANAGEMENT SOUTHERN 2  
REGIONAL AND OUTER METROPOLITAN

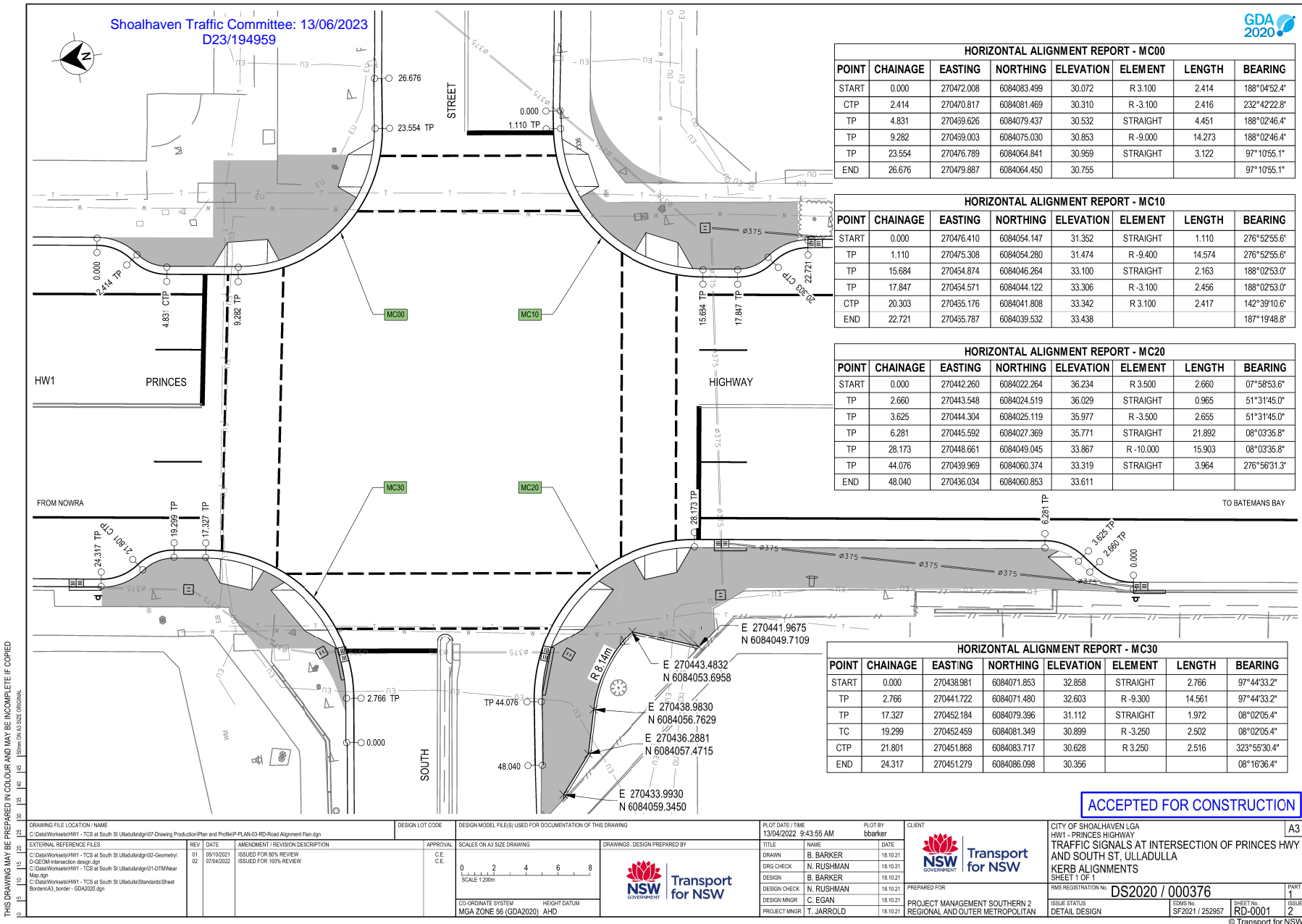
CITY OF SHOALHAVEN LGA  
HW1 - PRINCES HIGHWAY  
TRAFFIC SIGNALS AT INTERSECTION OF PRINCES HWY  
AND SOUTH STREET, ULLADULLA  
RMS PROJECT No.  
P 0066668  
DESIGN PROJECT No.  
SF2021 / 252957  
RMS REGISTRATION No.  
DS2020 / 000376  
ISSUE STATUS  
DETAIL DESIGN  
SHEET No.  
GE-0001  
ISSUE  
2

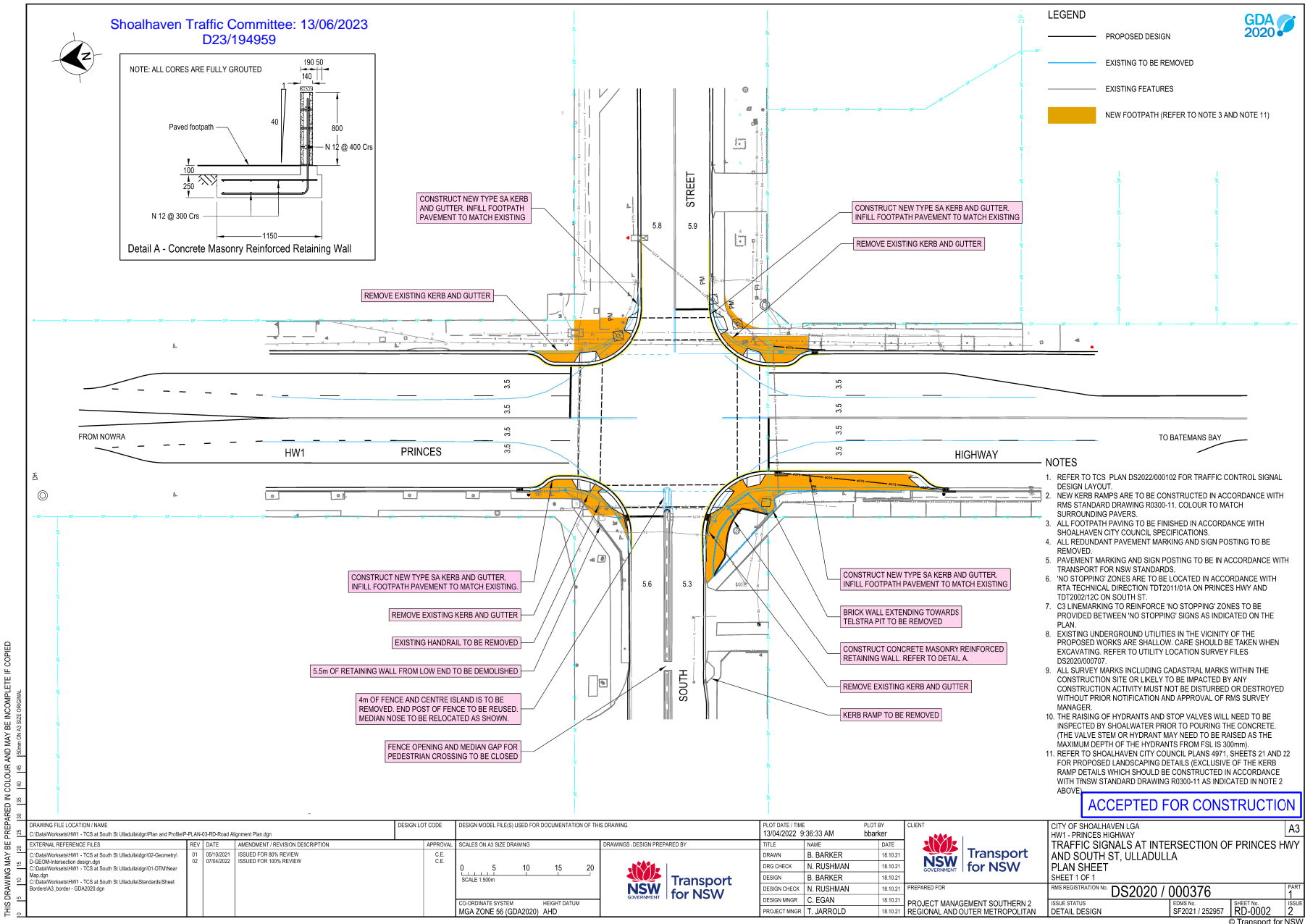
A3

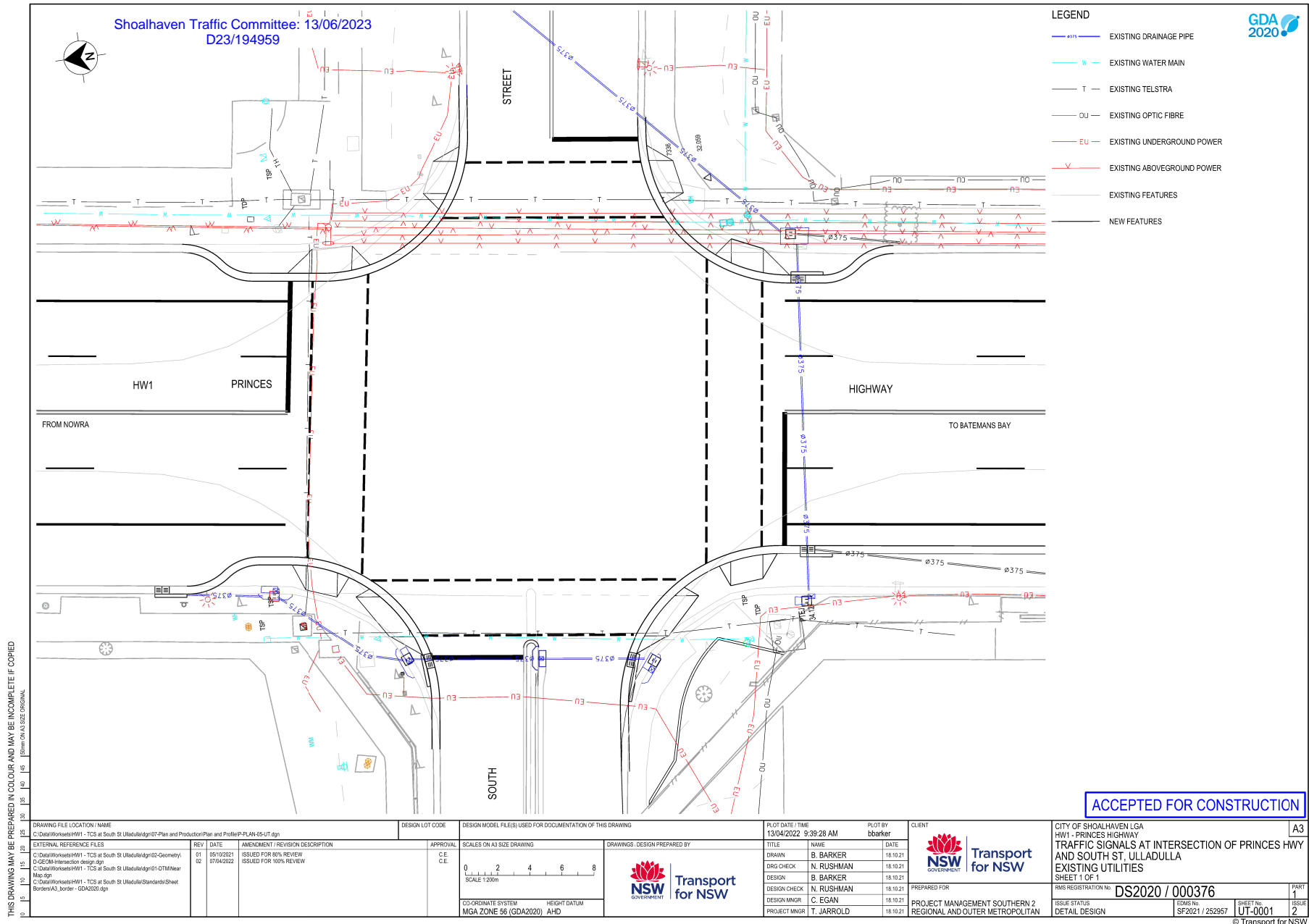
© Transport for NSW

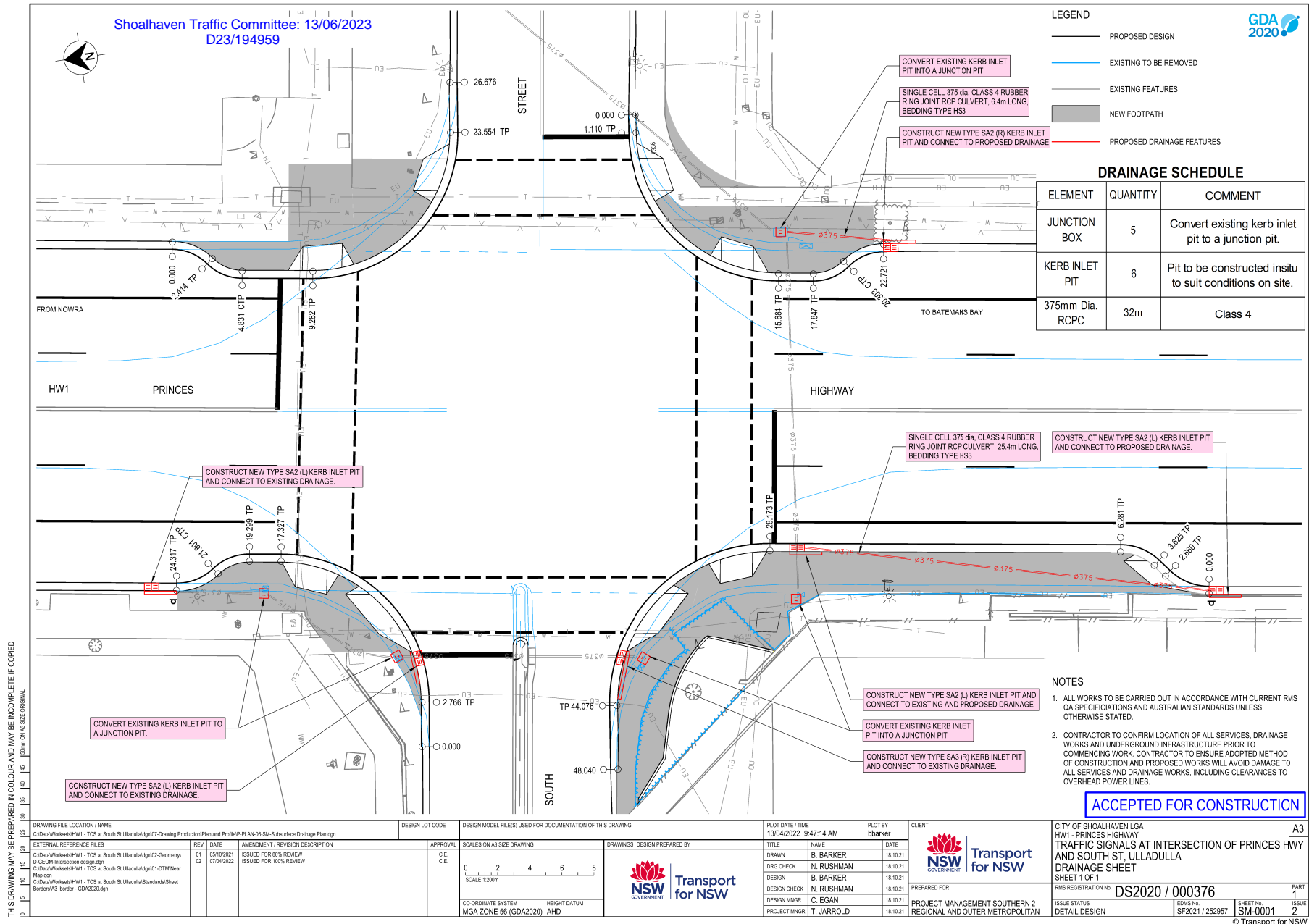




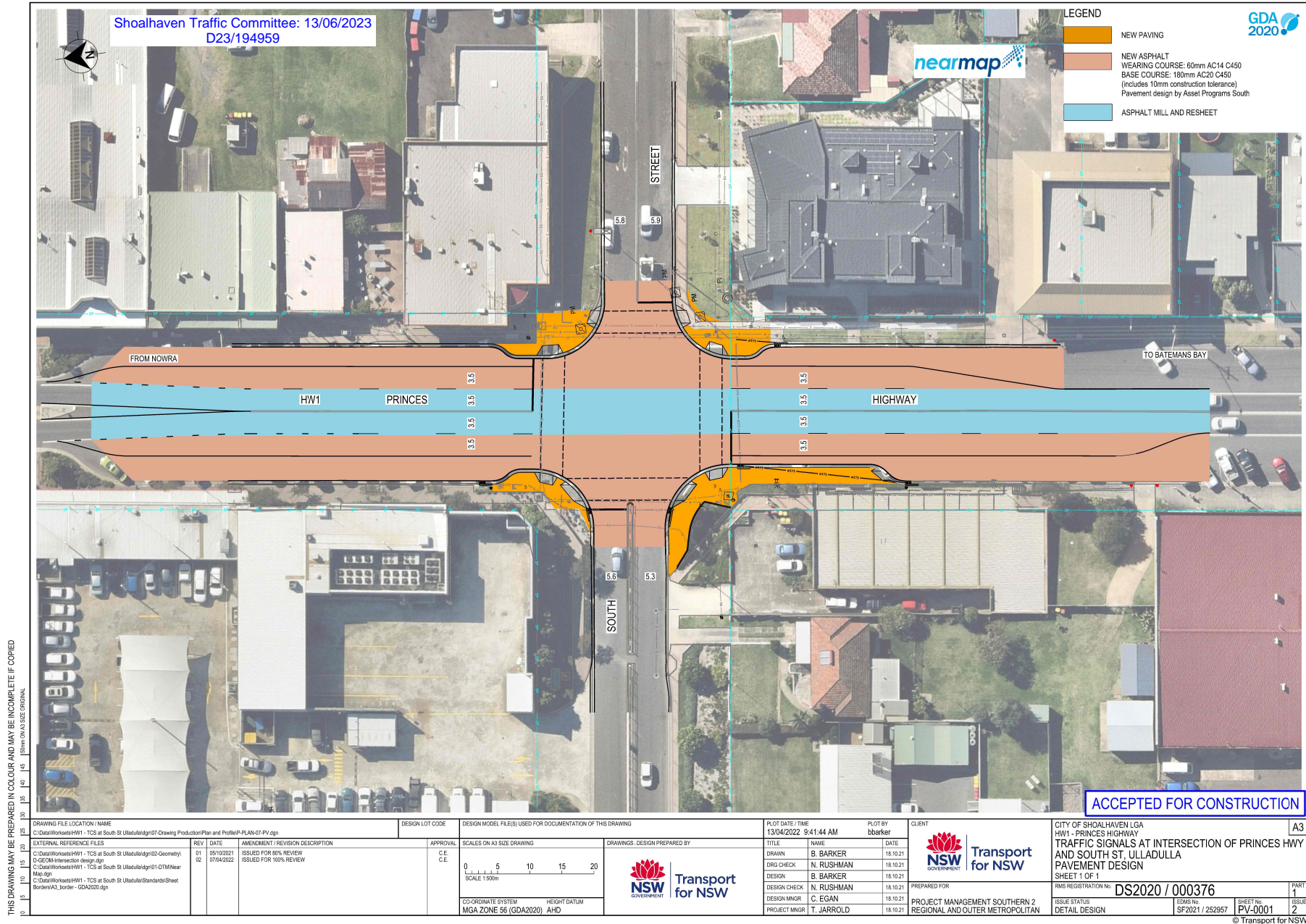


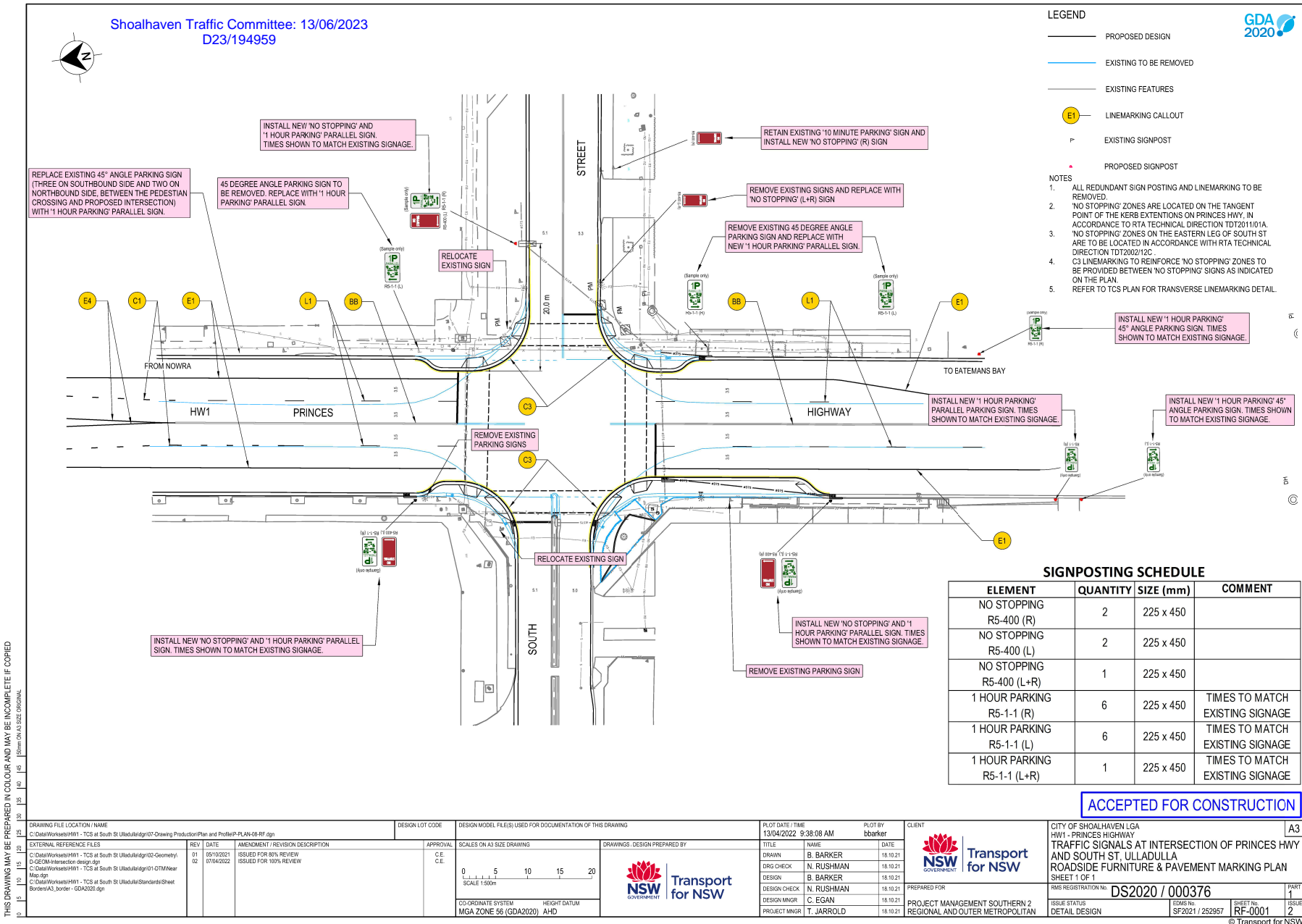




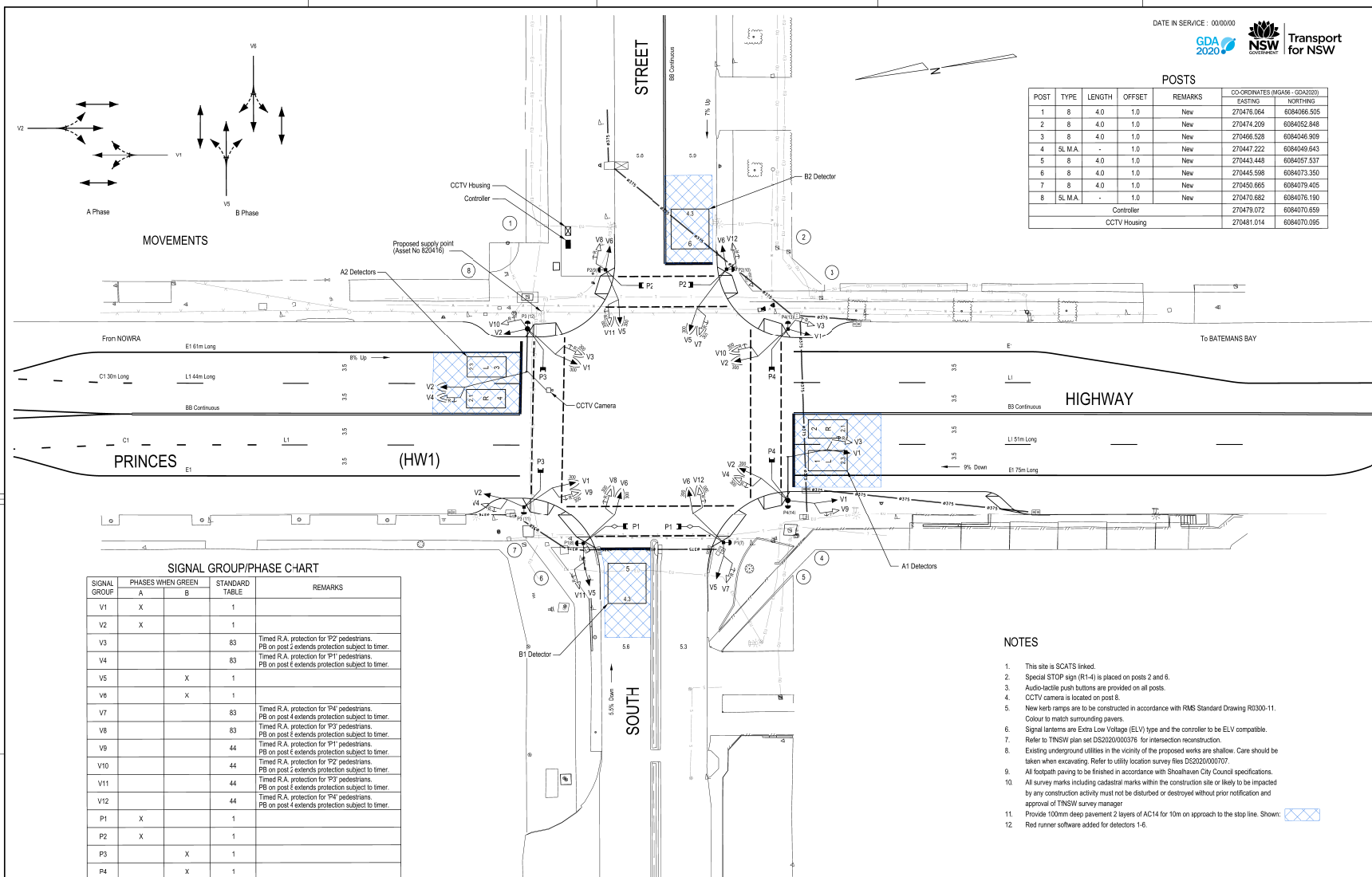









TCS 5135



SIGNAL GROUP	PHASES WHEN GREEN		STANDARD TABLE	REMARKS
	A	B		
V1	X		1	
V2	X		1	
V3			83	Timed R.A. protection for P2 pedestrians. PB on post-4 extends protection subject to timer.
V4			83	Timed R.A. protection for P1 pedestrians. PB on post-4 extends protection subject to timer.
V5		X	1	
V6		X	1	
V7			83	Timed R.A. protection for P4 pedestrians. PB on post-4 extends protection subject to timer.
V8			83	Timed R.A. protection for P3 pedestrians. PB on post-4 extends protection subject to timer.
V9			44	Timed R.A. protection for P1 pedestrians. PB on post-4 extends protection subject to timer.
V10			44	Timed R.A. protection for P2 pedestrians. PB on post-7 extends protection subject to timer.
V11			44	Timed R.A. protection for P3 pedestrians. PB on post-4 extends protection subject to timer.
V12			44	Timed R.A. protection for P4 pedestrians. PB on post-4 extends protection subject to timer.
P1	X			
P2			1	
P3		X	1	
P4	X		1	

POST	TYPE	LENGTH	OFFSET	REMARKS	CO-ORDINATES (MAGU4 - GD2010)	
					EASTING	NORTHING
1	8	4.0	1.0	New	270478.064	6084066.505
2	8	4.0	1.0	New	270474.209	6084052.846
3	8	4.0	1.0	New	270466.528	6084046.905
4	SL MAGA	-	1.0	New	270447.222	6084040.643
5	8	4.0	1.0	New	270443.448	6084057.537
6	8	4.0	1.0	New	270445.598	6084073.350
7	8	4.0	1.0	New	270450.665	6084079.405
8	SL MAGA	-	1.0	New	270470.682	6084076.190
Controller					270478.072	6084070.655
CCTV Housing					270481.014	6084070.095

- ## NOTES
1. This site is SCATS linked.
  2. Special STOP sign (R1-4) is placed on posts 2 and 6.
  3. Audio-tactile push buttons are provided on all posts.
  4. CCTV camera is located on post 8.
  5. New curb ramps are to be constructed in accordance with RMS Standard Drawing R0300-11. Colour to match surrounding pavements.
  6. Signal lanterns are Extra Low Voltage (ELV) type and the controller to be ELV compatible.
  7. Plan to TNSN plan set DS2020/000379 for intersection reconstruction.
  8. Existing underground utilities in the vicinity of the proposed works are shallow. Care should be taken when excavating. Refer to utility location survey files DS2020/000707.
  9. All footpath paving to be finished in accordance with Shouhean City Council specifications.
  10. All survey marks including cadastral marks within the construction site or likely to be impacted by any construction activity must not be disturbed or destroyed without prior notification and approval of TNSN survey manager.
  11. Provide 100mm deep asphalt over 2 layers of AC14 for 10m on approach to the stop line. Shown: 
  12. Red number software added for identification of A6.14

A ORIGINAL ISSUE

Shoalhaven Traffic Committee: 13/06/2023  
D23/194959

PUBLIC UTILITY LEGEND		REFERENCE PLANS		U.S.D. Ref. Map 111 G11	
HYDRANT		SYMBOLS/ABRVS	V0005-4	I.S.G. E.	252 086
STOP VALVE		STOP POEN CMPT	V0001-5	COORDS N.	1 086 344
GAZ VALVE		INSTL STOP DET	V0005-7	DESIGNED: B. BARKER	
SEWER MANHOLE		VER GROUP OP	TS-TN-619	CHECKED: N. COOKE	
COMMS PIT		DET LOGIC OP	TS-TN-603	SITE CHECKED	
ELECT LIGHT POLE		PED MVT OP	TS-TN-621	N. COOKE	
POWER POLE					
STAY POLE					
TELEPHONE BOX		SURVEYOR: J. Rodgers		RECOMMENDED	
COMMS SHED		DATE: 1-10-2009			

1	<b>DESIGN APPROVAL</b>
3	<b>APPROVED</b>
7	
	NAME <u>Norelle Cooke</u>
	POSITION <u>Senior Road Design Mgr</u>
	DATE _____
	<b>DESIGN PREPARED BY</b>
	<b>ROAD DESIGN</b>
	<b>ENGINEERING SERVICES</b>
	<b>TECHNICAL AND PROJECT SERVICES</b>


<b>TNSW RECOMMENDATION</b> <b>ROAD DESIGN ENGINEERING</b> NAME _____ POSITION _____ DATE _____	
<b>NETWORK OPERATIONS</b> NAME <u>Chris Harding</u> POSITION <u>Area Leader N.O.</u> DATE _____	

TFNSW ACCEPTANCE	
ACCEPTED	
NAME	Rosemary Crowhurst
POSITION	Director Assets South
DATE	
ACCEPTED BY	
Regional Assets - Network & Assets	
SECTION	

	TRANSP
	SHOA T PRINC
	DESIGN LAYOUT

TRANSPORT FOR NEW SOUTH WALES

SHOALHAVEN CITY COUNCIL  
TRAFFIC SIGNALS AT  
PRINCES (HW1) HIGHWAY AND  
SOUTH STREET  
ULLADULLA

EXISTING <input type="checkbox"/>		PROPOSED <input checked="" type="checkbox"/>	
CADD FILE: V/5135_1A_DES.DGN			
SCALE  1" = 20'			ISSUE
FILE SF2022/045212		SUPERSEDES SHEET/ISSUE -/-	A
REG No. DS02022/000102		TCS No. 5135	SHEET 1









## TC23.31 Linemarking - Elizabeth Drive - Vincentia (PN 3760)

**HPERM Ref:** D23/195177

**Convenor:** David Pieresko

**Attachments:** 1. PN 3760 Plans [↓](#)

### Recommendation (Item to be determined under delegated authority)

That:

1. The Chief Executive Officer (Director City Services) be advised that the Shoalhaven Traffic Committee has no objection to the proposed Linemarking at Elizabeth Drive, Vincentia as per Plan No. D23/195179.
2. The recommendation be approved by the Director City Services under delegated authority from Shoalhaven City Council - refer MIN21.411

### Background:

Shoalhaven City Council has received concerns regarding occasional speeding and improper parking along Elizabeth Drive in Vincentia.

### Details of Submission:

The proposed line marking will assist in delineating a 3.5-metre-wide travel lane, and aid in the delineation of on-street parking.

The extent of this proposal would involve the installation of E1 Edge line marking from Illfracombe Avenue to The Wool Road, a distance of approximately 1980 metres. This is to be complemented with C3 Yellow line marking on the approach to The Wool Road roundabout for a distance of 60 metres, reinforcing existing “No Stopping” restrictions.

### Consultation:

Council commenced consultation with affected residents, stakeholders and the Vincentia Ratepayers and Residents Association in April 2023 to discuss the proposal. To date, Council has received fifteen (15) submissions, four (4) supporting the proposal, four (4) against the proposal and seven (7) giving a mixed response. Those against this proposal had concerns that this should be a matter for police enforcement, that parking would be lost, and that road repairs should be prioritized instead. Council has informed these residents that this proposal retains existing parking capacities. Those with mixed responses also have concerns that this will not resolve the speeding issues or improve pedestrian safety at this location. Some respondents would have liked to see roundabouts and others new K&G to narrow down the lane widths.

The line marking solution proposed is considered to be a cost-effective measure to improve guidance for road users and promote safer driving behaviour.



**Risk Implications:**

This proposal is expected to reduce the incidence of speeding by providing the perception of a narrower roadway and provide a delineation between travel and parking lanes, improving road safety in the area.

**Financial Implications:**

The line marking for this proposal would be funded by Transport for NSW's Block Grant Funding allocated to Council for new signage and line marking.



















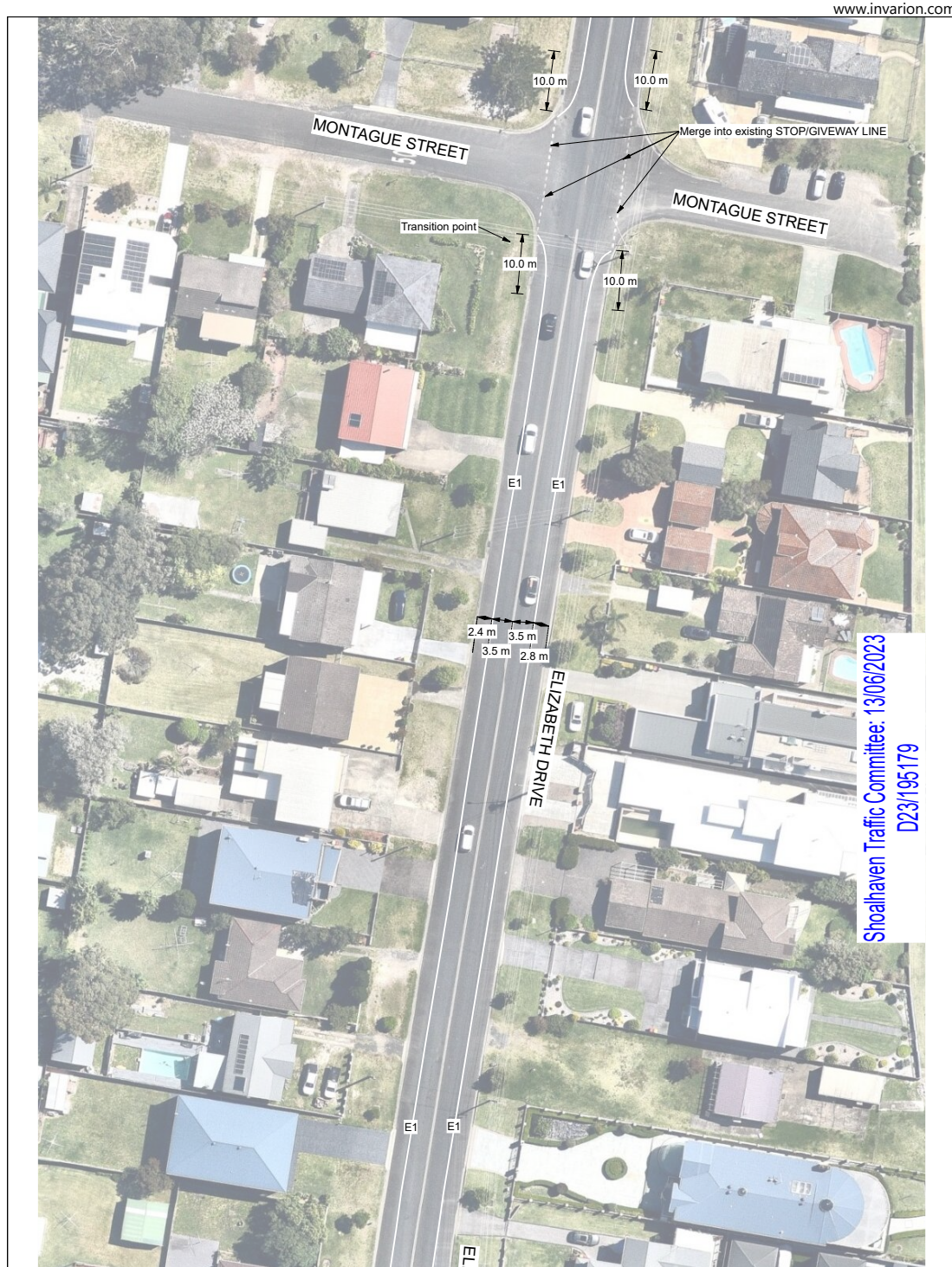
## TC23.31 - Attachment 1





## TC23.31 - Attachment 1









# TC23.31 - Attachment 1





# TC23.31 - Attachment 1





# TC23.31 - Attachment 1







## TC23.32     **Parking Restrictions - Church Street - Milton (PN 3761)**

**HPERM Ref:**     D23/201103

**Convenor:**     David Pieresko

**Attachments:**     1. PN 3761 Plan [↓](#)

### **Recommendation (Item to be determined under delegated authority)**

That:

1. The Chief Executive Officer (Director City Services) be advised that the Shoalhaven Traffic Committee has no objection to the proposed Parking Restrictions at Church Street, Milton as per Plan No. D23/201104.
2. The recommendation be approved by the Director City Services under delegated authority from Shoalhaven City Council - refer MIN21.411

### **Background:**

Shoalhaven City Council has received concerns regarding parking and road safety on Church Street in Milton.

Council staff have conducted a site inspection at this location, taking note of existing signage, current parking restrictions and road conditions. From this inspection, it was found that there is not enough distance to meet the requirements of the Standards for on-street parking between the egress from Council's carpark (behind Milton IGA) and the driveway for 37 Church Street.

Due to the issue of insufficient space at this location, Council is proposing the installation of parking restrictions along this section of Church Street to improve safety.

### **Details of Submission:**

This proposal would involve the installation of 9.9m of "No Stopping" restrictions and associated line marking across part of the frontage of 37 and 41 Church Street.

### **Consultation:**

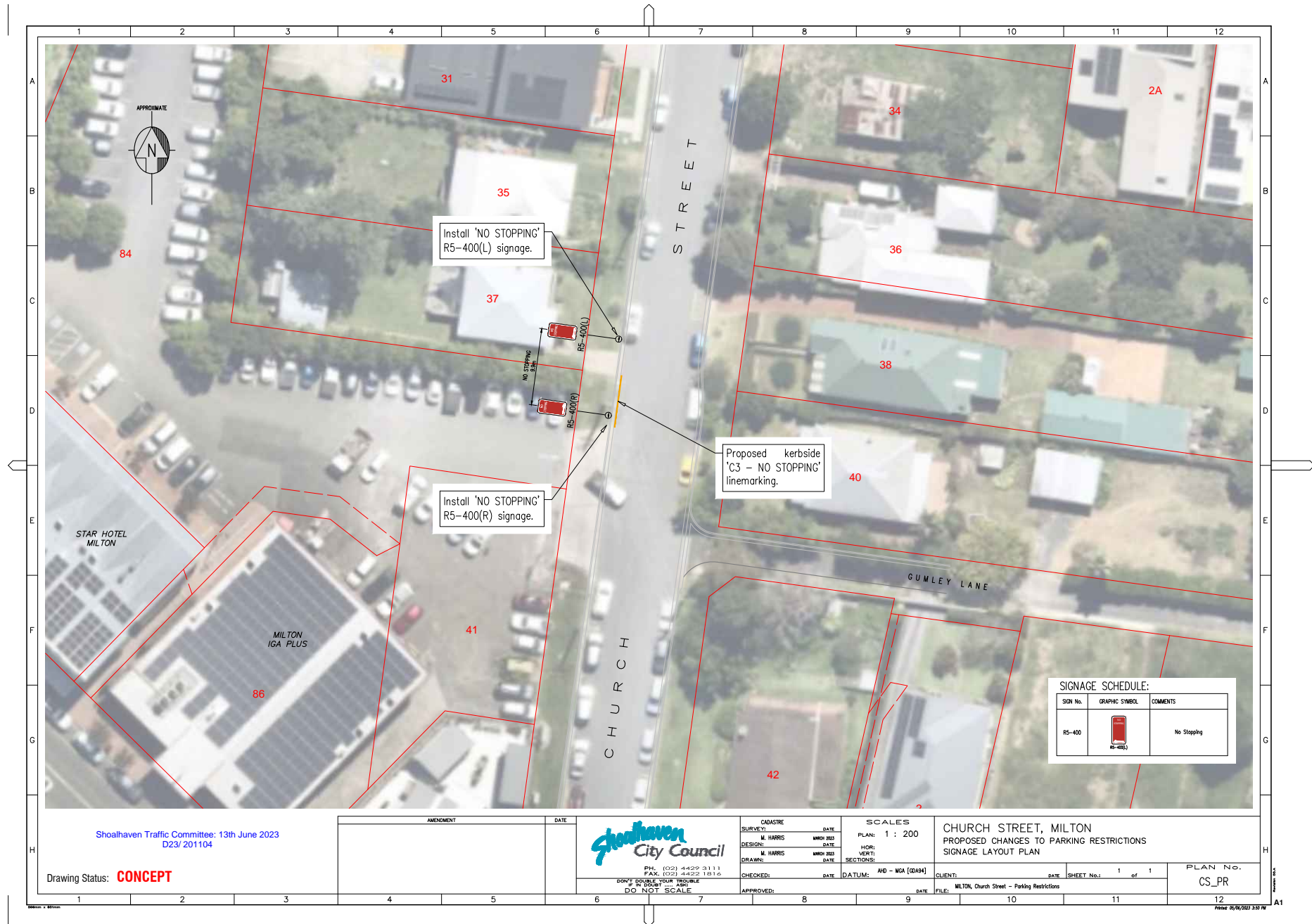
Council commenced consultation with affected residents, stakeholders and the Milton District Forum in April 2023 to discuss the proposal. To date, Council has received four (4) submissions, all support the proposal.

### **Risk Implications:**

This proposal would facilitate improved access onto Church Street from Council's carpark, reduce the potential for traffic accidents and illegal parking, and improve road safety.

### **Financial Implications:**

The signage for this proposal would be funded by Transport for NSW's Block Grant Funding allocated to Council for new signage and line marking.



## TC23.33     **Parking Restrictions - Railway Street - Bomaderry (PN 3762)**

**HPERM Ref:**     D23/204882

**Convenor:**     David Pieresko

**Attachments:**   1. PN 3762 Plan [↓](#)

### **Recommendation (Item to be determined under delegated authority)**

That:

The Chief Executive Officer (Director City Services) be advised that the Shoalhaven Traffic Committee has no objection to the proposed Parking Restrictions at Railway Street, Bomaderry as per Plan No. D23/204888.2.     The recommendation be approved by the Director City Services under delegated authority from Shoalhaven City Council - refer MIN21.411

### **Background:**

Shoalhaven City Council has received concerns regarding limited vehicle manoeuvrability and congestion due to parked vehicles, limited sight distance and vehicle safety along Railway Street in Bomaderry.

As such, Council staff have investigated the existing signage, parking, and road conditions at this location and a sight distance assessment was conducted for various driveways fronting No. 10 Railway Street. From this investigation, it was noted that there are inadequate levels of sight distance to approaching northbound and southbound vehicles.

Furthermore, due to the manoeuvrability issues and limited sight distance at this location, Council is proposing the installation of parking restrictions along this section of Railway Street to improve safety.

### **Details of Submission:**

This proposal would install two (2) sections, totalling approximately 99 metres of “No Stopping” restrictions with C3 Yellow line marking along the frontages of 2-10 Railway Street, and 25 metres of “No Stopping” restrictions along the frontage of 13 Railway Street.

This proposal would result in the loss of approximately 10 car spaces. The manoeuvring requirements of large trucks and semi-trailers has been taken into consideration in determining the Parking Restrictions, as well as mitigating the loss of existing parking. Details of the worst-case scenario turning movements have been provided as part of the submitted plan set.

### **Consultation:**

Council commenced consultation with affected businesses and the Pride of Bomaderry in May 2023 to discuss the proposal. To date, Council has received two (2) submissions, both supporting the proposal.

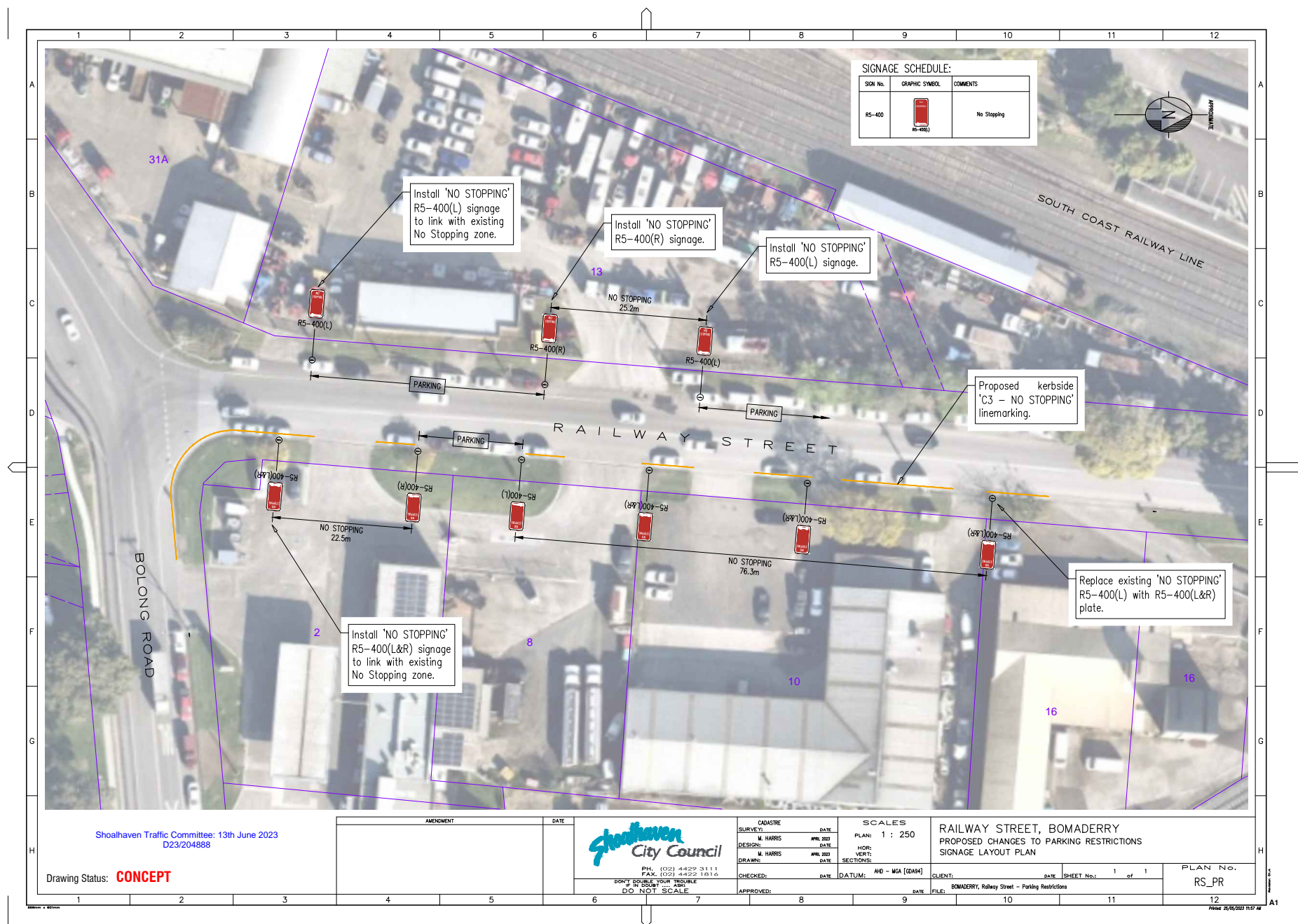
**Risk Implications:**

This proposal would facilitate improved access to adjacent businesses by providing better manoeuvrability for large trucks and semi-trailers that utilise this industrial area. It would also improve sight distance along Railway Street by reducing potential conflicts created by stationary vehicles, promoting safer reaction times, reducing the potential for traffic accidents, and improving road safety.

**Financial Implications:**

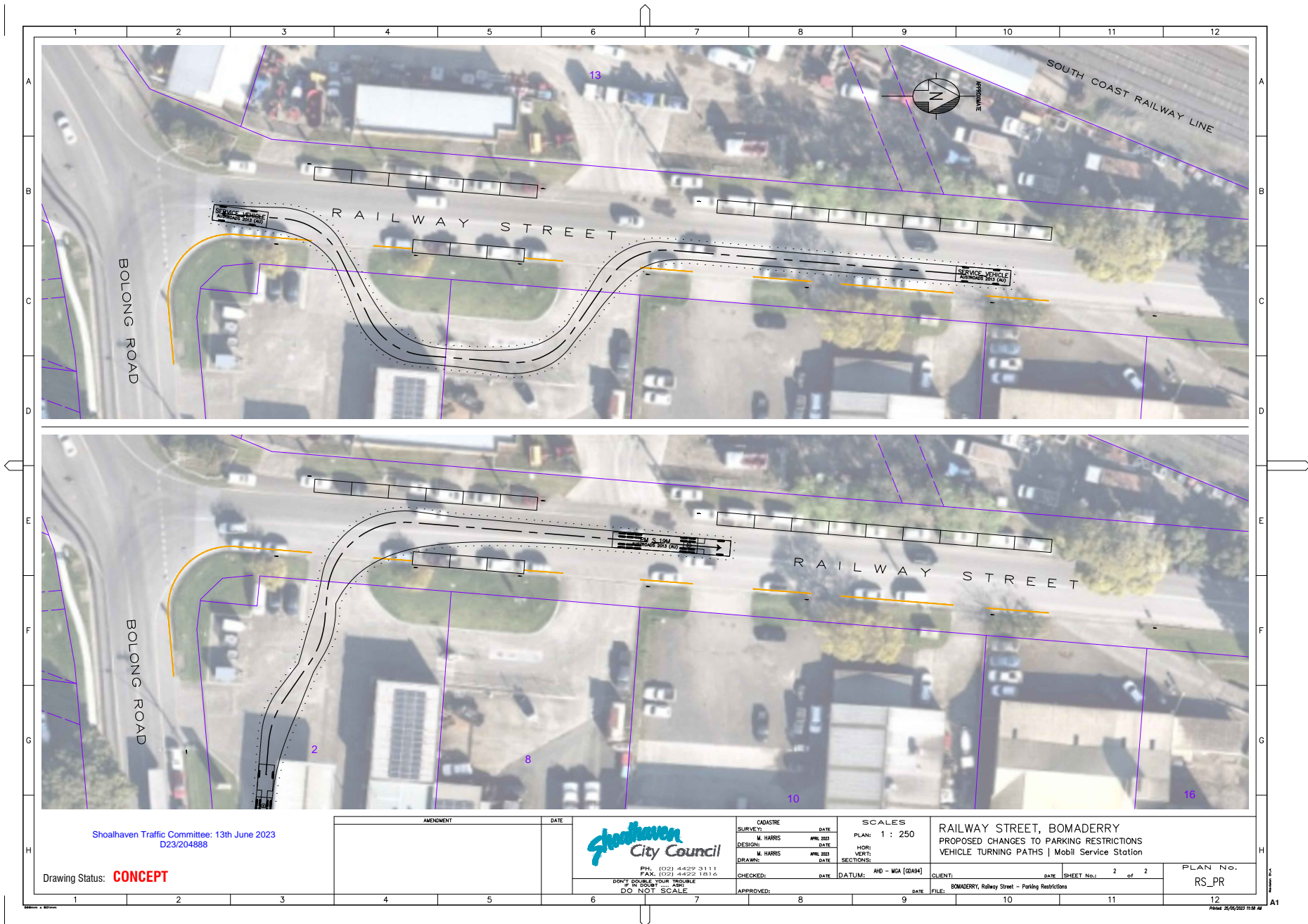
The line marking and signage for this proposal would be funded by Transport for NSW's Block Grant Funding allocated to Council for new signage and line marking.











## TC23.34 Linemarking & Parking Restrictions - River Road - Sussex Inlet (PN 3763)

**HPERM Ref:** D23/222111

**Convenor:** David Pieresko

**Attachments:** 1. PN 3763 Plan [↓](#)

### Recommendation (Item to be determined under delegated authority)

That:

1. The Chief Executive Officer (Director City Services) be advised that the Shoalhaven Traffic Committee has no objection to the proposed parking restrictions & line marking at River Road, Sussex Inlet as per Plan No. D23/222112.
2. The recommendation be approved by the Director City Services under delegated authority from Shoalhaven City Council - refer MIN21.411

### Background:

Shoalhaven City Council has received concerns regarding road safety issues at the northern corner of River Road in Sussex Inlet.

As such, Council staff have investigated the existing signage, parking restrictions and road conditions. From this investigation it was noted that there is sufficient roadway width to permit parking in this area, however buses and large trucks may experience some difficulty manoeuvring through the corner with opposing traffic.

### Details of Submission:

The extent of this proposal would involve the installation of 25 metres of double barrier “BB” centreline marking around the northern corner of River Road, adjacent to the Sussex Inlet Veterinary Surgery.

It is also proposed to install approximately 33 metres of “No Stopping” parking restrictions complemented with C3 Yellow line marking to ensure compliance with s208 of the NSW Road Rules.

The parking restrictions along the north-eastern side of the roadway will result in the loss of three (3) unrestricted parking spaces.

### Consultation:

Council commenced consultation with affected residents, businesses, stakeholders and the Sussex Inlet & Districts Community Forum in May 2023 to discuss the proposal. To date, Council has received two (2) submissions, one (1) supporting the proposal and one (1) giving a mixed response.

### Risk Implications:

This proposal is expected to reduce the potential for accidents on this section of road, improving road safety and vehicle manoeuvrability.

**Financial Implications:**

The signage and line marking for this proposal would be funded by Transport for NSW's Block Grant Funding allocated to Council for new signage and line marking.



