

# Southern Coastal Management Program Advisory Committee

**Meeting Date:** Wednesday, 17 March, 2021

**Location:** Council Chambers, City Administrative Centre, Bridge Road, Nowra

## Minutes Attachments

### Index

SC21.2	Update on Lake Conjola CMP	
	Attachment 1 Presentation - Update on Lake Conjola CMP .....	3





# Coastal Management

## Southern Advisory Committee



[shoalhaven.nsw.gov.au](http://shoalhaven.nsw.gov.au) f @ y t



# Lake Conjola Coastal Management Program (CMP) Forward Program



## Timeline

CMPs priority and timeline for completion as follows:

Coastal Management Program Priority	Timeline for Completion	Area
Lake Conjola Estuary	2021	Southern
Shoalhaven Coastline Jervis Bay *	2021	All/Central
Sussex Inlet, Swan Lake, Berrara Creek St Georges Basin *	2022	Central
Lower Shoalhaven River	2022	Northern
Lake Wollumboola	2023	Northern
Burrill Lake Lake Tabourie Lake Willinga	2023	Southern
Currambene Creek, Moona Moona Creek	2024	Central
Shoalhaven Urban & Rural Estuaries	2025	All

- ✓ Council adopted program
- ✓ 5 years for completion of entire LGA
- ✓ Priorities listed

\* CMPs will be certified as one document for these areas



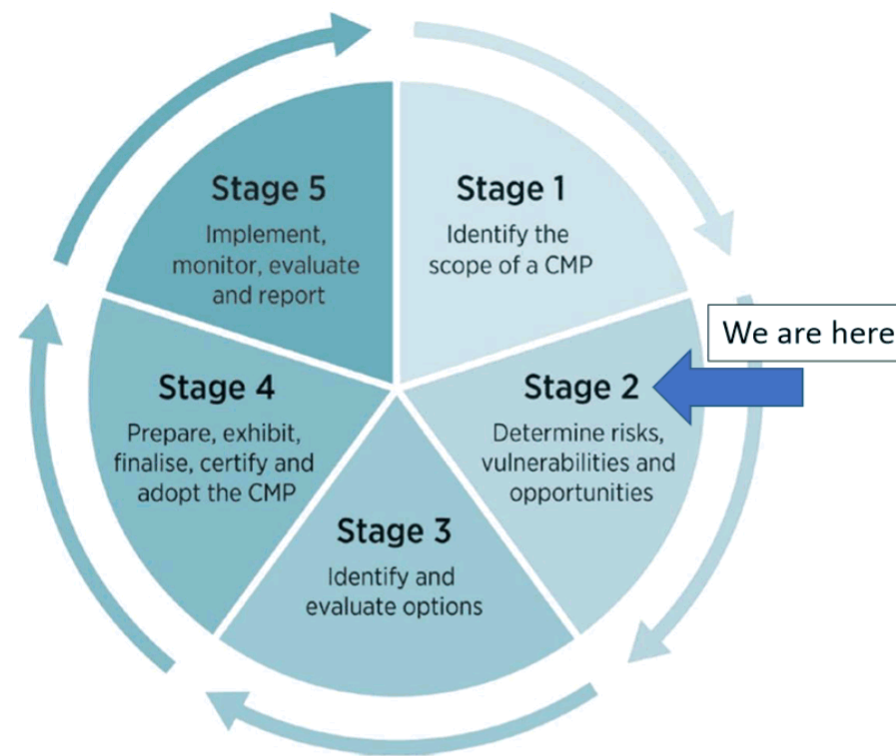


- ✓ Lake Conjola CMP
- ✓ Shoalhaven Scoping Study (Stage 1)
- ✓ Royal HaskoningDHV engaged



Royal  
HaskoningDHV

- ✓ Delivery of Stages 2-4



## Royal HaskoningDHV - key project team members



**Greg Britton**, who has 43 years professional experience in the investigation, design and documentation, planning, environmental assessment, and project management of coastal, estuary and maritime projects. Greg has provided expert advice on coastal, maritime and environmental engineering to the NSW Land and Environment Court, NSW Supreme Court, Queensland Supreme Court, Federal Court of Australia and several Commissions of Inquiry.

Greg has a strong knowledge of Lake Conjola having been involved in projects at the Lake since the 1990s, including the Lake Conjola Entrance Study prepared for Shoalhaven City Council by Patterson Britton & Partners in 1999.



**Adrian Turnbull**, who has significant local government experience in this strategic and technical area, including over 10 years at Northern Beaches Council in the role of Manager Coast & Catchments. Adrian was a key member of the team that led engagement actions, guiding development and adoption of the Coastal Zone Management Plan & associated Coastal Erosion Policy, as well as delivery of on-ground actions for Collaroy-Narrabeen Beach, the New South Wales number one coastal erosion "hot-spot".

Adrian recently led delivery of the Stockton Coastal Management Program for City of Newcastle, the first CMP to be certified in New South Wales. Adrian is currently project managing delivery of Stages 2-4 of the Bate Bay Coastal Management Program for Sutherland Shire Council, the Open Coast & Lagoons Scoping Study for Central Coast Council



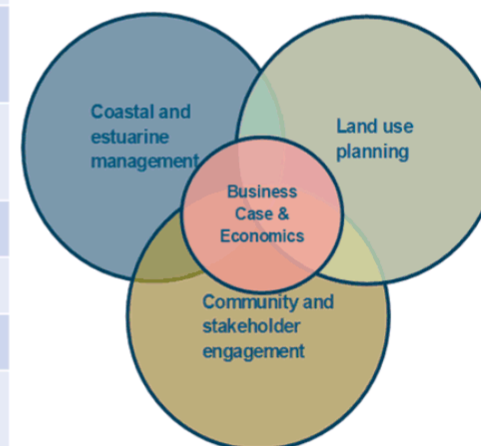


## Lake Conjola CMP



CMP Stage	Information/Study
Stage 2	Appointment of CMP Committee Working Groups
	Review and update Estuary Processes Study
	Compile water quality data from AquaData and undertake water quality and environmental health study of Lake Conjola.
	Tidal and Coastal inundation modelling and mapping Inundation risk assessment
Stage 3	Community and Stakeholder Consultation
	Update Lake Entrance Management Policy
	Development and assessment of entrance management options
	Detailed risk assessment for coastal environment, coastal vulnerability, coastal use areas.
	Develop management actions and business case for adoption
Stage 4	Prepare, exhibit, finalise, certify and adopt the CMP

Successful delivery of the CMP requires a balanced combination of:





## Lake Conjola CMP



### Examples of CMP Stage 2 – Technical analysis

#### Stage 2

- Compile water quality data from AquaData and undertake water quality and environmental health study of Lake Conjola.
- Review, analysis and synthesis of previous entrance studies and more recent data and literature
- Develop and calibrate Hydrodynamic Model
- Field based assessments
- Tidal and Coastal inundation modelling and mapping
- Inundation risk assessment
- Development and assessment of entrance management options
- Detailed risk assessment for coastal environment, coastal vulnerability, coastal use areas.



## Lake Conjola CMP



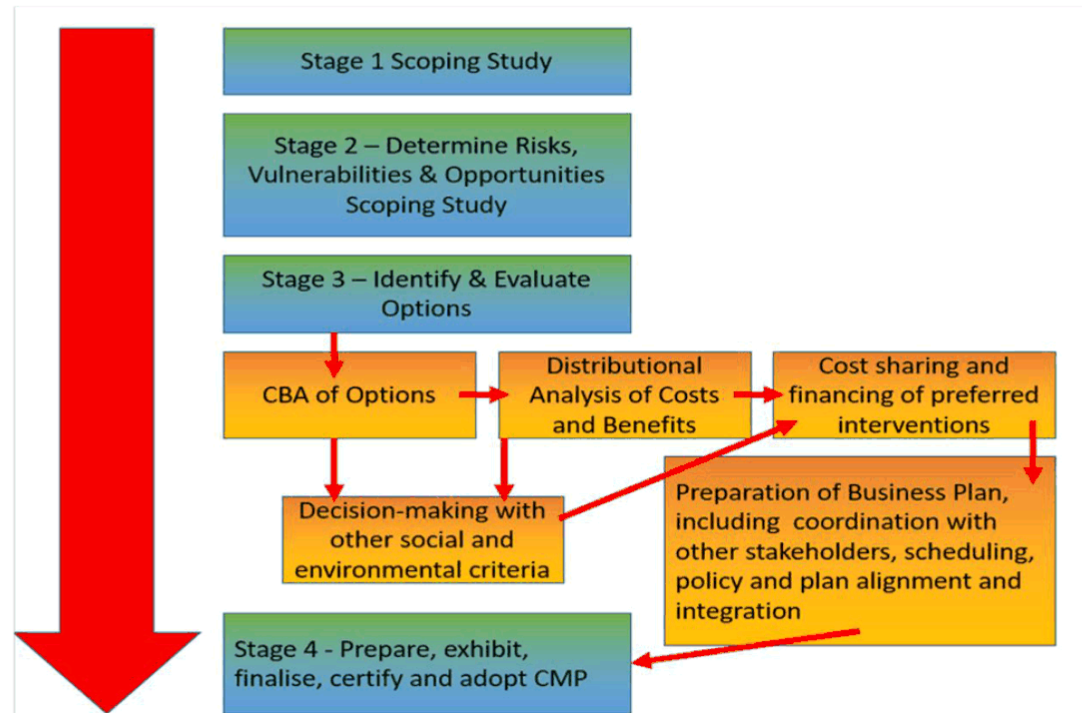
Consider the knowledge of community concerns gained from Stage 1 Scoping Study, assess against quantitative data where possible.

Examples of identified priority issues in the Lake Conjola region	
Transparency of decision making	Nutrient plumes
Previous reports and studies	Funding sources
ICOLL classification	Ecological communities
Health of Lake Conjola	Legacy developments
Management of Lake opening	Water quality



## Lake Conjola CMP

Stage 3 includes consideration of economic and land use planning factors

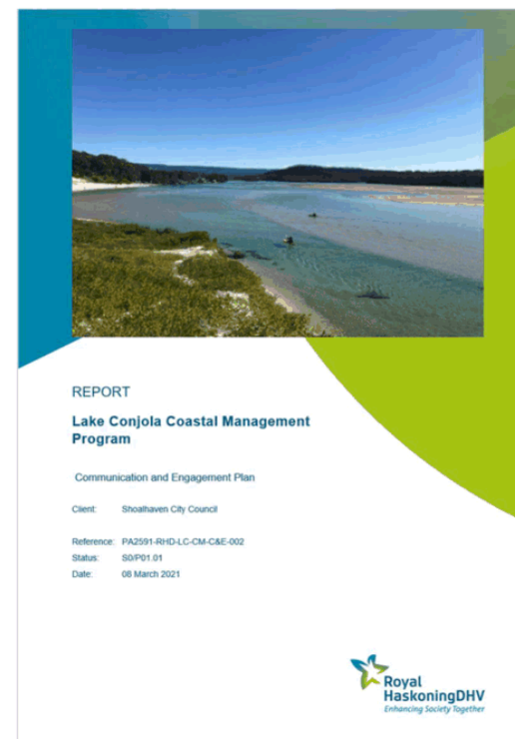


## Lake Conjola CMP



### Communication & Engagement Plan

- Many opportunities for engagement throughout development and delivery of the CMP.
- Engagement will occur at a range of stages in CMP.
- Each event will be tailored for audience.
- C&E Plan will be augmented over time – becoming a supporting document for the CMP to demonstrate effective engagement.



## Lake Conjola CMP



### Communication & Engagement Plan

- This meeting is the first step of CMP Stage 2 engagement – Awareness Raising
- Second event will be a drop-in session at Lake Conjola on 30 March 2020
  - Introduce the purpose of the Scoping Study, purpose of the CMP and future steps;
  - Reflect current knowledge;
  - Discuss historic management actions.



## Lake Conjola CMP



### Engagement with the Southern Coastal Management Advisory Committee (approximate dates)

#### July/August 2021

- Present findings of the Stage 2 modelling and coastal processes investigations;
- Review / amend Vision, Purpose and Objectives of the Lake Conjola CMP;
- Identify and discuss potential management options.

#### August/September 2021

- Participate in the community and stakeholder survey.

#### October 2021

- Review results of stakeholder and community engagement;
- Consider actions to incorporate into CMP.

#### February 2022

- Review draft CMP and (Optional) Planning Proposal.

